



TWG Europe Limited Single Group Solvency and Financial Condition Report

Period ended 31 December 2020



ASSURANT®

Contents

I Terms and Acronyms.....	4
II Introduction.....	5
III Summary	6
Statement of Directors' Responsibilities	9
A Business and performance	10
A.1 Business	10
A.2 Underwriting Performance	14
A.3 Investment Performance.....	17
A.4 Performance of other activities.....	19
A.5 Any other disclosures	20
B System of governance.....	21
B.1 General information on the system of governance.....	21
B.2 Fit and proper requirements	26
B.3 Risk management system including the own risk and solvency assessment.....	27
B.4 Internal control.....	30
B.5 Internal audit function.....	31
B.6 Actuarial function.....	32
B.7 Outsourcing	32
B.8 Any other disclosures	33
C Risk management.....	34
C.1 Underwriting risk.....	34
C.2 Market risk.....	36
C.3 Credit risk.....	38
C.4 Liquidity risk	39
C.5 Operational risk	40
C.6 Other material risks	42
C.7 Stress testing and sensitivity analysis	42
C.8 Any other disclosures	43
D Valuation for Solvency Purposes	44
D.1 Assets.....	45
D.2 Technical provisions.....	49
D.3 Other liabilities.....	54

D.4 Alternative methods for valuation.....	56
D.5 Any other disclosures	56
E Capital management.....	57
E.1 Own funds.....	57
E.2 Solvency Capital Requirement and Minimum Capital Requirement.....	60
E.3 Use of the duration-based equity risk sub-module in the calculation of the Solvency Capital Requirement	61
E.4 Differences between the standard formula and any internal models used.....	61
E.5 Non-compliance with the minimum capital requirement and significant non-compliance with the solvency capital requirement	61
E.6 Any other disclosures	62
F. Appendices	63

I Terms and Acronyms

Term	Definition
AEI	Assurant Europe Insurance N.V.
AEL	Assurant Europe Life Insurance N.V.
AES	Assurant Europe Services B.V.
AFM	Autoriteit Financiële Markten
AGIL	Assurant General Insurance Limited
AGL	Assurant Group Limited, the UK holding company of AGIL and ALL
AGL Group	Assurant Group Limited and its subsidiaries
ALL	Assurant Life Limited
ARCC	Audit, Risk and Compliance Committee of Assurant Europe Group
Assurant, Inc. or AIZ	Assurant, Inc. the ultimate parent and controlling party of both AGL and TWGE.
Assurant Europe Group, AEG	The Assurant Europe Group refers to AGL, TWGE and their respective subsidiaries and their related branches.
Board	The board of directors of TWGE, LGI & LGL
Brexit	The exit of the UK from the EU
CAE	Chief Audit Executive of Assurant, Inc.
DNB	De Nederlandsche Bank, Dutch local supervisor
EEA	European Economic Area
EIOPA	European Insurance and Occupational Pensions Authority
ELC	European Leadership Committee
ESC	Extended Service Contracts
EU	European Union
FCA	Financial Conduct Authority in the UK
GAAP	Generally Accepted Accounting Practices
IAS	Internal Audit Services
KFH	A Key Function Holder is one which has been identified by the PRA because of their influence within the system of governance.
LGI	London General Insurance Company Limited
LGL	London General Life Company Limited
MCR	Minimum Capital Requirement, calculated as per the Solvency II Directive
MI	Management information
ORSA	Own Risk and Solvency Assessment
PRA	Prudential Regulation Authority in the UK
RMF	Risk Management Framework
RSR	Regular Supervisory Report
SCR	Solvency Capital Requirement, calculated as per the Standard Formula set out in the Solvency II Directive.
SFCR, Report	Solvency and Financial Condition Report
SIF	Senior Insurance Function
SMF	Senior Manager Function: A SMF is one which has been identified by the PRA as having ‘significant influence’ on the management and conduct of a firm’s regulated activities. These are identified in a firm’s Governance Map.
SoG	System of Governance
Solvency II or SII	The Solvency II Regulations of the EU as implemented in the UK by the PRA
Standard Formula	The Standard Formula calculation of solvency capital requirements for firms not using an internal model or partial internal model as set out in the Solvency II Directive.
TWGE	TWG Europe Limited, the UK holding company of LGI, LGL, AEI and AEL. The supervised insurance holding company under Solvency II

TWGE Group, the Group	TWGE and its subsidiaries, including LGI and LGL
TWGSL	TWG Services Limited

II Introduction

TWGE Group's Solvency and Financial Condition Report is prepared on a group basis and includes details of London General Insurance Company Limited and London General Life Company Ltd, its UK insurance subsidiaries.

The TWGE Group also includes TWG Services Limited, which is the TWGE Group's UK services company, that provides administration services to the Group and directly to clients; Assurant Europe Insurance N.V. and Assurant Europe Life Insurance N.V. (AEL) which write insurance business in Europe; and Assurant Europe Services B.V., which is the TWGE Group's Dutch services company, that provides administration services to the group and directly to clients in Europe.

Together these companies are referred to in this document as "TWGE Group" or "the Group".

TWGE Group has an approved waiver from the Prudential Regulation Authority (PRA) allowing for the Group to produce one single SFCR (per Article 256 of Solvency II (Directive 2009/138/EC)).

LGI and LGL are based in the UK. During the year LGI and LGL traded through various branches and freedom of service arrangements in Europe until 2 November 2020 when that business was transferred to European based insurers. Both are regulated by the Financial Conduct Authority and PRA. LGI and LGL are both subject to Solvency II regulations and are at times referred to in this document as the "SII insurance firms". The group has no other entities that are subject to SII on a solo basis.

This Solvency and Financial Condition Report has been prepared under the requirements of the SII regulations as implemented in the UK by the PRA, which became effective from 1 January 2016.

The SFCR covers insurance and non-insurance business undertaken by TWGE Group as well as its two UK SII insurance firms, LGI and LGL. The TWGE Group has obtained a waiver from the PRA allowing the preparation of a single group SFCR rather than being required to prepare individual SFCRs for the TWGE, LGI and LGL. The information in this SFCR contains all the information that would otherwise have been included in the individual SFCRs. Unless specifically stated, references in this document to the TWGE Group should be assumed to apply equally to the SII insurance firms LGI and LGL.

AEI and AEL are regulated by their local supervisor De Nederlandsche Bank, and are both subject to the Solvency II regulations. AEI and AEL each report a SFCR separately and are therefore not included individually in this SFCR.

Assurant, Inc., the ultimate parent company, also owns two other insurance entities in the UK, Assurant General Insurance Limited and Assurant Life Limited. These are reported separately as part of the AGL Group and are not included in this SFCR.

The SFCR includes the public quantitative reporting templates included in Appendix F of this document.

III Summary

TWGE Group is part of Assurant in the UK and Europe, Assurant Europe group. AEG is a leading provider of automotive protection and mobile device solutions, with a focus on helping connected customers keep their lives running smoothly. AEG is part of the International business unit of Assurant, Inc. AIZ is a leading global provider of housing and lifestyle solutions that support, protect and connect major consumer purchases. Anticipating the evolving needs of consumers, Assurant partners with the world's leading brands to develop innovative products and services and to deliver an enhanced customer experience. As a group headed globally by a Fortune 500 company, Assurant partners with clients who are leaders in their industries to provide consumers with a range of protection products and services, and is among the market leaders in mobile device solutions; extended service contracts; vehicle protection services; renters insurance and lender placed homeowners insurance.

AGL, TWGE and their respective subsidiaries in the UK and EU are part of AEG.

The TWGE Group specialises in the underwriting, administration, and marketing of three core product lines:

- Appliance & Technology (A&T) - including warranty, theft, and accidental damage;
- Automotive extended warranty (Auto) - motor warranty, including Guaranteed Asset Protection (GAP) and ancillary insurances; and,
- Creditor - including unemployment, accident and life which is largely in run -off.

These are primarily consumer insurance products that are marketed across Europe through freedom of service arrangements. These are distributed on a Business-to-Business basis through relationships with a range of motor dealers, manufacturers, retailers, financial institutions, and other distributors.

Products	Programme Solutions	Services
<p>As people become more dependent on connectivity and technology, we design, create, and manage various products that meet consumer needs within a connected and mobile life.</p> <p>Our product philosophy is to continually innovate and deliver the type of solutions that meet consumers ever changing needs.</p> <p>All our products are distributed by well-known brands throughout the UK and across Europe.</p>	<p>Assurant can create tailor-made product and service programmes across a range of consumer markets to offer an end-to-end packaged solution.</p>	<p>Our propositions to clients are highly flexible and can range from a full “turn-key” solution through to an individual outsourced service.</p> <p>No two businesses are the same and we believe that offering flexibility to suit our clients' needs, has always been, and will continue to be paramount to a successful business relationship.</p>

Performance for the period

For the year ended 31 December 2020, TWGE Group made an underwriting loss of £5,881,000 (2019: £1,267,000 - Profit) under UK generally accepted accounting practices. LGI made an underwriting loss of

£4,772,000 (2019: £1,377,000 - Profit) and LGL an underwriting loss of £612,000 (2019: £110,000 - loss) under UK GAAP.

Further details are provided in Section A.

Risk Management

As a provider of insurance products and services to a variety of corporate and individual clients, risk management is an integral part of TWGE Group's business processes.

The risk strategy is owned by the Board, and it is the Board's responsibility to ensure that the business strategy and risk strategy do not diverge. The Risk Function has responsibility to report divergence to the Audit, Risk and Compliance Committee together with the appropriate recommendations, including risk mitigation, which could include reassessing risk appetite.

TWGE Group employs a comprehensive Risk Management Framework that includes a full range of policies, procedures, measurement, reporting and monitoring techniques to ensure that the risk exposures that arise from operating the Group's business are appropriately managed.

All employees are required to follow the Risk Management Framework and risk management policies and procedures.

The Risk function is responsible for overseeing implementation of the risk strategy and challenging the risks inherent within the business strategy.

The main risks TWGE Group, LGI and LGL are exposed to are, underwriting risk followed by credit risk due to counterparty default.

Capital and Solvency

TWGE Group, LGI and LGL calculate their solvency capital requirement (SCR) using the Standard Formula. Own Funds, including the calculation of technical provisions, are calculated based on the valuation requirements set out in the SII Directive.

The capital positions of TWGE Group and the two SII insurance firms are summarised below:

As at 31 December 2020	TWGE Group	LGI	LGL
£'000			
Available Own Funds	139,557	42,581	4,404
Eligible Own Funds to meet the MCR	137,236	42,213	4,404
Eligible Own Funds to meet the SCR	139,557	42,581	4,404
SCR/MCR (for LGL only)	64,134	28,463	3,338
Solvency Ratio %	218%	150%	132%

As at 31 December 2019	TWGE Group	LGI	LGL
£'000			
Available Own Funds	110,058	90,766	5,161
Eligible Own Funds to meet the MCR	106,200	89,288	5,161
Eligible Own Funds to meet the SCR	110,058	90,766	5,161
SCR/MCR (for LGL only)	50,965	46,235	3,187
Solvency Ratio %	216%	196%	162%

TWGE Group, LGI and LGL maintained own funds more than their SCR and MCR requirements for the full year. The difference between available and eligible own funds relates to the quantitative restrictions applied under the SII Directive to the amount of Tier 2 and Tier 3 capital that is eligible to meet the SCR and MCR. Further detail is given in Section E.

Statement of Directors' Responsibilities

The Directors are responsible for preparing the single group SFCR in accordance with the Prudential Regulatory Authority (PRA) rules and SII Regulations.

The PRA Rulebook for SII firms in Rule 6.1(2) and Rule 6.2(1) of the Reporting Part requires that the Group must have in place a written policy ensuring the ongoing appropriateness of any information disclosed and that the Group must ensure that its SFCR is subject to approval by the Directors.

Each of the Directors, whose names and functions are listed in section B1 of this document on page 21, confirms that, to the best of their knowledge:

a) Throughout the financial year in question, the Group and its solo insurance undertakings have complied in all material respects with the requirements of the PRA rules and SII Regulations as applicable; and

(b) It is reasonable to believe that, at the date of the publication of the SFCR, the Group and its solo insurance undertakings continue to comply and will continue to comply in future.

By Order of the Board

Claude Sarfo-Agyare

Chief Financial Officer

29 April 2021

A Business and performance

A.1 Business

Undertakings included in the SFCR

This is the single Group SFCR for the TWGE Group. It covers the business of TWGE Group on a consolidated group basis, with TWGE as the supervised parent company, and individually for the two UK incorporated insurance firms LGI and LGL.

Supervised Group Parent:	TWG Europe Limited	Legal Form Private limited company	Principle activity Holding company
SII Firms:	London General Insurance Company Limited PRA firm reference number: 202689	Private limited company	General insurance
	London General Life Company Limited PRA firm reference number: 202801	Private limited company	Life insurance

Unless otherwise stated the information in this document should be understood to refer to TWGE, LGI and LGL.

Regulator

TWGE Group (on a group basis), LGI and LGL are supervised by the PRA in the UK. LGI and LGL are also regulated by the FCA in the UK. PRA and FCA contact details are below:

Prudential Regulation Authority
 20 Moorgate
 London
 EC2R 6DA
 0207 601 4878

Financial Conduct Authority
 25 The North Colonnade
 London
 E14 5HS
 0800 111 6768

Shareholder

TWGE directly holds 100% of the issued share capital and voting rights of LGL and LGL.

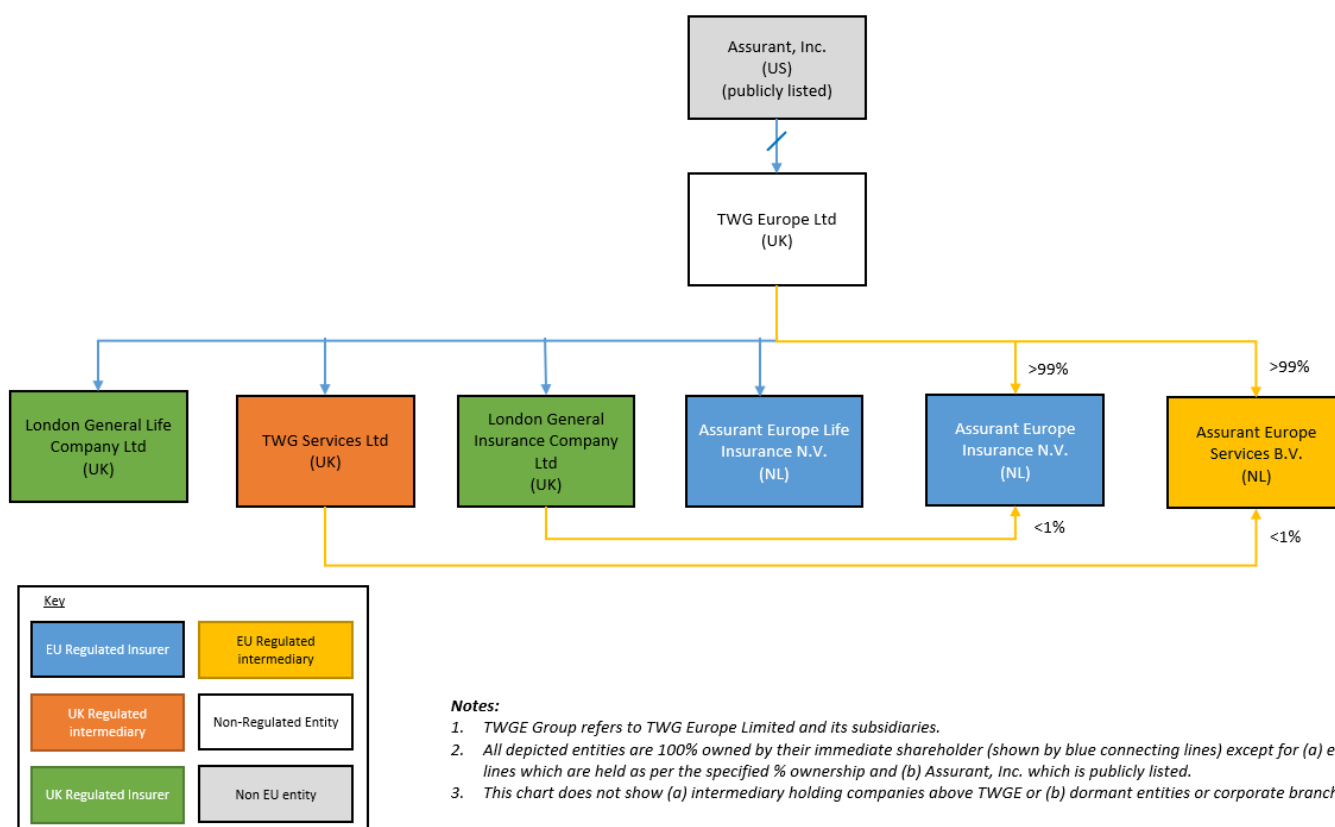
TWGE's immediate parent undertaking is the US based TWG Holdings, Inc., a wholly owned subsidiary of The Warranty Group, Inc., also US based.

The ultimate parent undertaking is Assurant, Inc., a public company listed on the New York Stock Exchange, registered in Delaware, United States of America.

TWGE Group Structure

The scope of the Group included in this SFCR for the purposes of providing consolidated SII and financial statement information is shown in the table below:

TWGE Group Corporate Structure



TWGE, LGL, LGL and TWGSL are considered within this SFCR. The structure chart also includes, the Dutch subsidiaries of TWG Europe Limited which are not within the scope of this SFCR.

Lines of Business and Geographical Areas

TWGE Group is a specialist business focused on insurance underwriting, administration, and marketing of three core product lines operating through companies based in the UK and Europe. These are primarily consumer insurance products that are marketed across UK & Europe and are distributed on a Business-to-Business basis through relationships with a range of motor dealers, manufacturers, retailers, financial institutions, and other distributors. The Group provides Motor Warranty, including Guaranteed Asset Protection, Appliance & Technology, including warranty, and Creditor, including unemployment, accident, and life.

All UK & European insurance operations are conducted by entities that are subsidiaries of TWG Europe Limited collectively known as the TWGE Group. TWGE Group operates two UK insurance companies, LGI and LGL and two EU insurance companies, AEI and AEL. LGI is an authorised provider of general insurance contracts. LGI's continued focus of the business growth strategy is with Auto and Appliance and Technology (A&T). LGL is an authorised provider of life insurance contracts. There are now minimal volumes of business through the entity, with no new business sought (only the run-off existing contracts and the renewal of monthly-pay-monthly-cover type products). Also, within the Group are TWGSL and AES, which are regulated intermediaries that provide administration to the group and directly to clients.

The majority of TWGE Group's operations are based in the UK and with additional offices in Netherlands. The table below shows a subset of the main operating entities. The UK entities are regulated by the PRA and/or FCA and the entities in the Netherlands are regulated by the DNB and/or AFM.

Legal Entity	Country of incorporation and branches	Principal activity	Major lines of business
European Parent Company			
• TWG Europe Limited	• United Kingdom	• European holding company	• N/a
Solvency II insurance entities			
• London General Insurance Company Limited	• United Kingdom • Branches in Switzerland and EU	• General Insurance underwriter	• Fire and Other Property Damage • Miscellaneous Financial Loss
• London General Life Company Limited	• United Kingdom • Branches in EU including Netherlands, Belgium, Ireland	• Life Insurance underwriter	• Health Insurance • Other Life insurance
• Assurant Europe Insurance N.V.	• Netherlands	• General Insurance underwriter	• Fire and Other Property Damage • Miscellaneous Financial Loss • Health Insurance • Income protection
• Assurant Europe Life Insurance N.V.	• Netherlands	• Life Insurance underwriter	• Health Insurance • Other Life insurance
Insurance intermediary entities			

<ul style="list-style-type: none"> • TWG Services Limited 	<ul style="list-style-type: none"> • United Kingdom & EU 	<ul style="list-style-type: none"> • Intermediary and administrator for products underwritten by LGI and other underwriters.
<ul style="list-style-type: none"> • Assurant Europe Services B.V. 	<ul style="list-style-type: none"> • Netherlands 	<ul style="list-style-type: none"> • Intermediary and administrator for products underwritten by AEI and AEL.

TWGE Group had 260.5 full-time equivalent employees as of 31 December 2020.

As listed above LGI and LGL operates branches in the EU. Following the Part VII Transfer, LGI and LGL plan to formally close and de-register these branches by the end of 2021.

Significant events during the reporting period

UK exit from the European Union “Brexit”

Assurant is committed to providing clients and policyholders in the UK and Europe with its full suite of innovative risk management solutions including insurance and non-insurance related products. Currently, we have market presence within Germany, Italy, France, Poland, other EU countries and the UK and we contract with customers within these local markets. Assurant’s global expertise is delivered in a culturally sensitive way; aligned to the consumer’s need within their local market.

In readiness for the UK’s exit from the EU, AEG established new European non-life and life insurers to underwrite new policies and renew existing policies for both existing EU and new EU clients of AEG. Accordingly, AEI and AEL were established in The Netherlands in 2018 and received an insurance licence from the DNB in 2020. From June 2020 AEI has underwritten all new policies and renewed existing policies for both existing EU and new EU clients of AEG’s UK insurers.

In 2020, AEG completed a Part VII transfer to move existing EU business out of its UK insurers and into the new European insurers. The move from the existing insurers has been managed with minimal operational risk and disruption to customers, clients and AEG related undertakings’ employees.

Following completion of the Part VII transfers, LGL will only underwrite policies in the UK and LGI will only underwrite policies in the UK and Switzerland.

COVID 19

As a global organisation, Assurant has actively monitored the developments of the evolving situation resulting from COVID-19. Throughout this period of uncertainty, Assurant has acted swiftly and deliberately to safeguard employees, customers and business operations in line with Assurant values.

The Company has demonstrated resilience, both operationally and financially, throughout the COVID-19 crisis.

The COVID-19 crisis has affected the UK and EU workforce. The TWGE Group faced an unprecedented challenge in terms of its ability to provide ongoing customer policy and claims administration services through its related undertakings and other third-party providers. Work from home protocols were quickly established for the majority of staff and at third party contact centre providers and remain in place. For those employees that need to work in Assurant facilities, Assurant continues to enforce safety and

hygiene protocols, such as social distancing, per UK Government requirements and the guidelines of the Center for Disease Control and the World Health Organisation, to safeguard its employees.

Business volumes reduced as a direct result of declining economic activity in 2020. Assurant also experienced challenges in servicing customer claims through certain channels as business partners were forced to close down and lifestyle product claims cost increased where repair options were restricted and more claims were settled by replacement or in cash. With further lockdowns in place in 2021 these risks to performance are expected to continue.

The COVID-19 crisis saw increasing credit spreads which adversely affected the market valuation of the TWGE Group's corporate bond portfolio although values subsequently returned to previous levels later in the year. The Group worked with its investment advisors, including reviewing the impact of various stresses on the portfolio, to determine the impact and ensure they remained within the Group's risk buffers. Investment advisors have not identified any holdings as being at specific risk of default however they have identified a number of sectors, including for example transport and leisure, as being at risk of downgrade and this continues to be monitored.

The Group's receivables may be adversely affected if significant clients default; however, the majority are large listed financial services firms. Reinsurance exposures are mostly covered by appropriate collateral in place and hence the risk is not considered material.

A.2 Underwriting Performance

Consolidated financial statement information in this SFCR is presented on a UK GAAP basis.

LGL and LGI prepare financial statements under UK generally accepted accounting principles ("UK GAAP"). No consolidated financial statements are prepared for the TWGE Group as TWGE has taken advantage of the exemption from preparing consolidated financial statements, under the Companies Act 2006 Part 15 Section 401, as the results of TWGE Group are consolidated in the financial statements of the ultimate parent undertaking Assurant, Inc., which are publicly available.

Reference to "financial statements" below should be understood to refer to audited UK GAAP financial statements in respect of LGI and LGL and to unaudited UK GAAP financial statements in respect of TWGE Group.

The underwriting performance of TWGE Group, LGL and LGL by material SII line of business as reported in the financial statements is set out below:

TWGE Group Year ended 31 December 2020 £'000	Fire & Other Damage to Property	Miscellaneous financial loss	Health Insurance	Other life and non-life insurance	Total
Net Premium Written	20,982	35,827	6,329	324	63,462
Net Premium Earned	20,012	48,833	6,966	845	76,656
Net Claims Incurred	(7,979)	(12,688)	(4,841)	(461)	(25,969)
Expenses Incurred	(15,476)	(36,884)	(4,166)	(42)	(56,568)
Net Underwriting Performance	(3,443)	(739)	(2,041)	342	(5,881)

LGI Year ended 31 December 2020 £'000	Fire & Other Damage to Property	Miscellaneous financial loss	Health Insurance	General Business Technical Account
Net Premium Written	4,580	25,765	4,900	35,245
Net Premium Earned	8,741	44,238	5,735	58,714
Net Claims Incurred	(4,126)	(11,417)	(4,507)	(20,050)
Expenses Incurred	(7,180)	(33,502)	(2,754)	(43,436)
Net Underwriting Performance	(2,565)	(681)	(1,526)	(4,772)

LGL Year ended 31 December 2020 £'000	Health Insurance	Other Life Business	Long Term Business Technical Account
Net Premium Written	(3)	263	260
Net Premium Earned	(3)	263	260
Net Claims Incurred	46	(434)	(388)
Expenses Incurred	(512)	32	(480)
Net Underwriting Performance	(469)	(139)	(608)

TWGE Group Year ended 31 December 2019 £'000	Fire & Other Damage to Property	Miscellaneous financial loss	Health Insurance	Other life insurance	Total
Net Premium Written	10,517	36,582	5,856	(148)	52,807
Net Premium Earned	11,302	58,719	7,272	621	77,914
Net Claims Incurred	(4,606)	(15,951)	(6,115)	(349)	(27,020)
Expenses Incurred	(7,025)	(39,193)	(3,196)	(212)	(49,626)
Net Underwriting Performance	(329)	3,575	(2,039)	60	1,267

LGI Year ended 31 December 2019 £'000	Fire & Other Damage to Property	Miscellaneous financial loss	Health Insurance	Total
Net Premium Written	10,517	36,582	5,866	52,965
Net Premium Earned	11,302	58,719	7,415	77,436
Net Claims Incurred	(4,606)	(15,951)	(6,101)	(26,658)
Expenses Incurred	(7,025)	(39,193)	(3,183)	(49,401)
Net Underwriting Performance	(329)	3,575	(1,869)	1,377

LGL Year ended 31 December 2019 £'000	Health Insurance	Other Life Business	Long Term Business Technical Account
Net Premium Written	(10)	(148)	(158)
Net Premium Earned	(143)	621	478
Net Claims Incurred	(14)	(349)	(363)
Expenses Incurred	(13)	(212)	(225)
Net Underwriting Performance	(170)	60	(110)

The analysis of the long-term business technical account for TWGE Group and LGL excludes investment income and tax charges/credits that are attributed to long-term business for the purposes of statutory reporting.

For purposes of the consolidation, commission and other expenses paid by the SII insurance entities to other AEG intermediary and service companies have not been eliminated from the underwriting result and so the figures are in line with those reported in the reporting templates S.05.01 and S.05.02 in Appendix F. The equivalent commission and fee income in the intermediary and service companies and their own expenses e.g. staff wages, sub-broker commissions, overheads etc. are reported as other income and expenses and noted in section A.4 below.

Analysis of premium, claims and expenses by full SII line of business are included in templates S.05.01 for TWGE Group, LGI and LGL in Appendix F.

Results and performance

Consolidated

The underwriting performance of the two SII insurers is discussed below.

LGI

In 2020, LGI's gross written premiums reduced by 34% to £54,593,000 from £82,355,000. The reduction in written premiums was mainly due to the transfer of EU related policies to AEI on 2 November 2020 and as a direct consequence of multiple COVID-19 lockdowns imposed in the UK and EU during the year, reducing the Company's revenues from vehicle protection and extended warranty lines of business. This reduction was somewhat offset by an increase in revenue from appliance and technology related business from a major online retailer in the UK and EU.

The Company's net earned premiums reduced by 24% to £58,714,000 from £77,435,000 in 2020. This was due to the reduction in written premiums as above, in addition to the impact of schemes (including creditor business) that are in run-off. The commission ratio has increased from 58% to 63% as result of an increase in contingent commissions, which are based on the underwriting profitability of the underlying schemes. The expense ratio has increased to 11% due to increased cost recharges from AEG entities.

LGL

During the year gross premiums written were £274,000 compared to return premiums of £158,000 in the year before. Premiums were negative in the prior year due to the cancellation of policies. The Company ceased to write new business in 2018.

In the current year LGL has made a loss on ordinary activities before tax of £1,680,000 compared to a profit of £114,000 in the prior year. This is mainly due to the recognition of a provision for corporate expenses relating to claims fulfilment, which was subsequently transferred to AEL on 2 November 2020.

Analysis by geography

All general insurance business is underwritten in the UK and Europe and all risks are in the UK and Europe. All long-term business underwritten by LGL is underwritten in the UK and Europe and all risks are located in the UK and Europe.

An analysis of premium, claims and expenses by material country of risk location is provided in the template P.05.02 in the appendices.

A.3 Investment Performance

LGI and LGL's investment portfolios are made up of a mixture of fixed rate government gilts, corporate bonds and a small amount of collateralised securities. In addition, both entities hold short term investments in collective investment undertakings, being money market liquidity funds with next day access, and other short-term cash deposits. All investments are made subject to the Group's agreed financial risk policies.

TWGE Group's investment strategy is to hold the majority of investments to maturity where possible in order to provide certainty of the future income stream. Maturities and investment income are generally reinvested back into the portfolio where they are not used to fund payment of claims and other expenses.

Interest income is reducing as higher yielding investments purchased in the past have matured and been replaced with more recently issued bonds with lower yields as a result of the prolonged general low yield environment.

TWGE Group As at 31 December 2020 £'000	Dividend income/(expense)	Interest income / (expense)	Realised gains / (losses)	Unrealised gains / (losses)	Total
Government Bonds	-	738	(2,116)	1,828	450
Corporate Bonds	-	2,085	134	1,561	3,780
Collateralised Securities	-	12	6	(1)	16
Collective Investment Undertakings	-	-	-	-	-
Cash & Deposits	-	130	(26)	5	109
Total investment income	-	2,965	(2,002)	3,392	4,355

LGI As at 31 December 2020 £'000	Dividend income/(expense)	Interest income / (expense)	Realised gains / (losses)	Unrealised gains / (losses)	Total
Government Bonds	-	618	(2,027)	1,811	401
Corporate Bonds	-	1,689	60	939	2,689
Collateralised Securities	-	12	5	(1)	16
Cash & Deposits	-	162	(1)	-	161
Total investment income	-	2,481	(1,963)	2,749	3,267

LGL As at 31 December 2020 £'000	Dividend income/(expense)	Interest income / (expense)	Realised gains / (losses)	Unrealised gains / (losses)	Total
Government Bonds	-	42	(88)	77	30
Corporate Bonds	-	43	79	(73)	49
Collateralised Securities	-	-	-	-	-
Cash & Deposits	-	-	(12)	4	(8)
Total investment income	-	85	(21)	8	72

TWGE Group As at 31 December 2019 £'000	Dividend income/(expense)	Interest income / (expense)	Realised gains / (losses)	Unrealised gains / (losses)	Total
Government Bonds	-	1,005	(1,044)	372	333
Corporate Bonds	-	2,126	(920)	2,826	4,032
Collateralised Securities	-	11	-	2	13
Collective Investment Undertakings	13	310	-	-	323
Cash & Deposits	-	-	-	-	-
Total investment income	13	3,452	(1,964)	3,200	4,701

LGI As at 31 December 2019 £'000	Dividend income/(expense)	Interest income / (expense)	Realised gains / (losses)	Unrealised gains / (losses)	Total
Government Bonds	-	946	(994)	331	282
Corporate Bonds	-	2,066	(907)	2,640	3,799
Collateralised Securities	-	11	-	2	13
Collective Investment Undertakings	13	310	-	-	322
Cash & Deposits	-	-	-	-	-
Total investment income	13	3,332	(1,901)	2,972	4,416

LGL	Dividend	Interest income	Realised	Unrealised	Total
As at 31 December 2019	income / (expense)	/ (expense)	gains /	gains /	
£'000			(losses)	(losses)	
Government Bonds	-	59	(50)	42	51
Corporate Bonds	-	60	(13)	186	233
Collective Investment Undertakings	-	1	-	-	1
Cash & Deposits	-	-	-	-	-
Total investment income	-	120	(63)	228	285

Investment expenses include fees payable to the investment fund manager and an allocation of costs of the TWGE Group treasury function:

Investment expenses	TWGE Group	LGI	LGL
£'000			
Year ended 31 December 2020	(375)	(304)	(14)
Year ended 31 December 2019	(392)	(371)	(21)

A.4 Performance of other activities

No other material lines of business are pursued by the TWGE Group, however, as part of the TWGE Group's product offering, TWGE Group receives administration fees from The Warranty Group Services (Isle of Man) Limited (a related company within the global Group), and fees for administration services provided direct to clients).

In addition, foreign exchange movements are considered below.

Other income below includes; other income from solo accounts; elimination and classification adjustments on consolidation; and, adjustments to income recognition.

Other Income (£'000's)	TWGE Group	LGI	LGL
Year ended 31 December 2020			
Net foreign exchange gains/losses	1,253	352	46
Administration fees - fellow group undertakings	3,551	-	-
Administration fees - third parties	10,312	-	-
Other income	7,822	8	-
Gain/(loss) on sale of fixed assets	5	-	-
Total Other Income	22,944	360	46

Other Income (£'000's)	TWGE Group	LGI	LGL
Year ended 31 December 2019			
Net foreign exchange gains/losses	(378)	(345)	(39)
Administration fees - fellow group undertakings	6,717	-	-
Administration fees - third parties	9,137	-	-
Other income	4,009	47	-
Gain/(loss) on sale of fixed assets	-	-	-
Total Other Income	19,485	(298)	(39)

A.5 Any other disclosures

In 2020, AEG completed a Part VII transfer to move any existing EU business out of its UK insurers and into the new European insurers.

LGI transferred insurance assets for consideration of £2,319,000 and was paid by AEI in exchange for equal amounts of net book values of assets and liabilities, resulting in a gain on disposal of £2,319,000.

LGL transferred net insurance assets transferred that were equal to that of the net insurance liabilities resulting in no gain or loss on disposal.

Overall TWGE took a charge of £2,914,000 related to the Part VII transfers from other Assurant firms.

B System of governance

B.1 General information on the system of governance

Governance Framework Overview

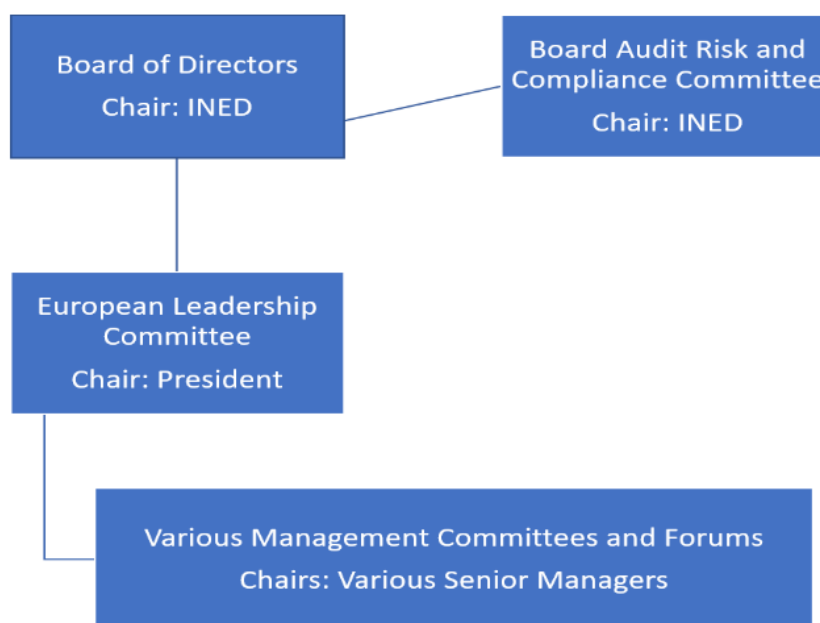
TWGE Group's system of governance sits within the overarching system of governance of Assurant Europe Group which operates a robust internal governance framework across all its entities, countries, and lines of business. The framework is organised in a manner relevant to business activities and size, factoring in specific local legal and / or regulatory requirements as necessary.

Board and management committees exist to direct, control and oversee activities in key areas such as:

- Strategy and business plans (setting, execution and monitoring thereof);
- Audit, risk, and compliance; and
- Day-to-day business activities and performance including:
 - Financial performance;
 - Sales and client management;
 - Customer experience;
 - Risk management;
 - Solvency, Capital and reserving;
 - People and culture;
 - Data governance;
 - Investments and treasury; and
 - Technology.

During 2020, the governance framework for the TWGE Group was organised through the following key bodies:

Governance Framework for TWGE Group



Board

Structure and Membership

Although each entity has a separately constituted board of directors, Assurant Europe Group operates a combined operating board structure with common directors across its core UK entities to enable aligned oversight and supervision of the Assurant Europe Group. The Board, with support from its Committee, oversees the whole of the Assurant Europe Group, except where reserved matters and/or specific local legal and / or regulatory requirements dictate otherwise.

The Board is composed of an appropriate combination of Executive Directors, Group Non-Executive Directors and a sufficient number and quality of Independent Non-Executive Directors who between them have sufficient breadth of understanding of the business to provide effective challenge.

During 2020, the Board was composed as listed in the table below. All directors held office for the whole year.

Director	Role	Approved Function
Colin Martin Kersley	INED	SMF9 - Chairman
Stuart Edward Purdy	INED	SMF10 - Chair of the Risk Committee SMF11 - Chair of Audit Committee
Christian Wesley Formby Hernandez	Executive	SMF1 - Chief Executive Officer
Claude Kwasi Sarfo-Agyare	Executive	SMF2 - Chief Finance Officer
Michael John Carter	Executive	SMF7 - Group Entity Senior Manager
Ricardo Jesus Morales-Gomez	GNED	SMF7 - Group Entity Senior Insurance Manager

Role and Responsibilities of the Board

The overriding collective role of the Board is to promote the long-term sustainable success of the Group, generating value for its stakeholders through effective governance and assumption by the Board of direct responsibility in the following key areas:

- Establishment of purpose, values, and strategy, ensuring alignment with the desired culture.
- Ensuring the necessary resources are in place to enable agreed objectives to be met and measuring performance against such objectives.
- Leadership within a framework of prudent and effective controls which enable risk to be assessed and managed.
- Engagement with shareholders and other stakeholders.

Executive Directors have an intimate knowledge of the business, whereas Non-Executive Directors bring a wider perspective; with relevant skills and experience of best practices they have a key role in constructively and independently challenging the Board and helping to develop strategy and business plans.

Non-Executive Directors also scrutinise the performance of the Executive Directors in meeting agreed goals and objectives and monitor the reporting of performance. They satisfy themselves on the integrity of financial information, and that financial controls and systems of risk management, are rigorous and robust.

Board Committees

Audit, Risk and Compliance Committee “ARCC”

To increase efficiency, the Board has a board-level committee, the Audit, Risk and Compliance Committee (ARCC), which is responsible for discharging governance responsibilities in respect of audit, risk, internal control, and compliance.

The ARCC is composed solely of Independent Non-Executive Directors, one of whom acts as Chair. Formal and regular meetings are held which include regular reports from Risk, Compliance, External Audit, Internal Audit, Actuarial and Finance.

As per its Terms of Reference, the ARCC’s key responsibilities include:

- a) Monitoring and reviewing the effectiveness of the internal audit function.
- b) Overseeing relationships with external auditors (including their effectiveness and independence) and assessing the integrity of the annual report and accounts.
- c) Overseeing the solvency and capital position.
- d) Overseeing the whistleblowing and fraud investigation process.
- e) Ensuring compliance with legal and regulatory requirements.
- f) Overseeing the effectiveness and appropriateness of the risk management and internal control frameworks.
- g) Reporting to the Board on how it has discharged its responsibilities.

Management Committees

As explained above, Assurant Europe Group operates a management committee structure to ensure appropriate oversight and control of performance, activity, and risks within the business.

The management committee structure is led by the European Leadership Committee (ELC) which is responsible (except where specific local legal and / or regulatory requirements dictate otherwise), for managing and overseeing the day to day business and affairs of the Assurant Europe Group in accordance with the agreed strategy and the authority delegated to it by the Board.

The ELC is chaired by the President and is composed of all Executive Directors plus other senior managers nominated by the President to represent certain business units, geographies, and functional areas. Formal and regular meetings are held, and relevant outputs are reported to the Board regularly via the President.

As per its Terms of Reference, the ELC’s key responsibilities include:

- a) Development and execution of strategy and business plans, and monitoring of performance thereof.
- b) Ensuring that activities are consistent with the strategy, risk tolerance/appetite and policies approved by the Board.
- c) Reporting to the Board (via the President) on how it has discharged its responsibilities.
- d) Oversee business functions, ensuring that the business has the necessary resources to meet its objectives.
- e) Monitoring the financial position, ensuring that applicable legal and regulatory requirements (including as to capital and solvency) are met.
- f) Overseeing business development and new business opportunities.
- g) Overseeing client relationships and customer experience.
- h) Setting and overseeing the management governance framework.

The ELC has established a number of management sub-committees and forums to assist it in completing the roles and responsibilities assigned to it by the Board. Each committee and forum has a core membership

consisting of relevant senior managers and, in general, committees and forums are chaired by the relevant Senior Manager Function (SMF) holder. Each sub-committee and forum is delegated with authority from the ELC to perform certain roles and responsibilities assigned to it within Terms of Reference set by the ELC. The sub-committees and forums are accountable to the ELC but do not relieve the ELC of any of its responsibilities.

Assessment of the adequacy of the system of governance

TWGE Group's system of governance is periodically reviewed by the Board in accordance with EIOPA guidelines on system of governance. Such reviews take into account the nature, scale and complexity of the business both at individual and at group level, as well as the structure of the group. The scope, findings and conclusions of such reviews are documented and reported to the Board with suitable feedback loops in place to ensure that any follow-up actions are undertaken and recorded.

Based upon the most recent internal review, the Board has assessed TWGE Group's system of governance to be adequate and appropriate to the nature, scale and complexity of the risks inherent in the business.

Material changes in governance structure

There were no material changes to the governance structure during 2020.

Key Functions

A Fit and Proper Person framework is followed to ensure functions are led by appropriately skilled people. In addition to the directors listed in the previous section, the following officers have also been approved by the appropriate UK regulatory bodies as at 31 December 2020 and all are subject to Assurant Europe Group's Fit and Proper Policy.

A complete list of SMF holders is shown below:

Name	Approved Function
C W Formby-Hernandez	SMF1 - Chief Executive Officer Responsible for Insurance Distribution (RID)
C Sarfo-Agyare	SMF2 - Chief Finance Officer
M J Schofield	SMF4 - Chief Risk Officer
C T Holmes	SMF5 - Head of Internal Audit
M J Carter	SMF7 - Group Entity Senior Insurance Manager
M Morales-Gomez	SMF7 - Group Entity Senior Insurance Manager
C M Kersley	SMF9 - Chairman
S E Purdy	SMF10 - Chair of Risk Committee SMF11 - Chair of Audit Committee
R Weddell	SMF16 - Chief Compliance SMF17 - Money Laundering Reporting Officer (LGL only)
Christopher Woolnough Mark Davies	SMF18 - Other Overall Responsibility
P M O'Callaghan	SMF18 - Other Overall Responsibility (LGI only)
W T Diffey	SMF20 - Chief Actuarial function
G A Davies	SMF23 - Chief Underwriter (LGI only)

The detailed responsibilities of each SMF Holder are documented in Management Responsibilities Maps for each insurer within the AGL Group which are reviewed and approved by the Board on a regular basis. This ensures that each SMF Holder has the necessary authority and operational independence to carry out their role. On an annual basis, as part of the Business Planning process, each SMF Holder will ensure that they have the necessary resources to deliver on their responsibilities. The Business Plan is reviewed and approved by the Board annually.

SMF Holders and External audit have direct access to the Audit Risk & Compliance Committee and the Board to share any concerns they may have about the governance framework.

Remuneration Policy

The ELC oversees remuneration policies and procedures for all staff below Executive level. Executive incentive plans and remuneration policies are governed at an Assurant, Inc. level by people with knowledge of relevant UK laws and regulations. For this reason, there is no UK based Remuneration Committee.

Assurant Europe Group places great value upon the contributions, skills and expertise of its employees and recognises the need to attract and retain the best talent to drive business performance. The remuneration

policy not only helps to attract and retain employees but also ensures that the Group has employees with the right skills and qualifications. It also recognises the importance of aligning incentives to encourage appropriate decision making and alignment with the business' objectives and risk management strategy.

Assurant Europe Group's remuneration policy and practices seek to provide incentives to employees that are within the risk tolerance limits of the business and could undermine the effective risk management of the Group and culturally aligned to our values. It is therefore necessary to provide for requirements on remuneration for the purposes of the sound and prudent management of the business and establish remuneration arrangements.

Variable remuneration is performance related; the total amount of the variable remuneration is based on a combination of the assessment of performance of the business and the individual. The performance of the business always outweighs the performance on the individual to ensure appropriate variable remuneration decision making is made.

There are a number of variable remuneration schemes which cover both short and long-term incentive plans. The scheme periods and deferral in respect of the short-term schemes are in line with the short-term nature of the insurance liabilities the business writes or are linked to client contracts. Each variable remuneration scheme has a different scope of employees and performance measurements. Variable remuneration schemes are aligned to the nature of the role and key responsibilities. Employees are only eligible to participate in either; Head Office bonus, STIP or SIP and one long term incentive scheme i.e. ALTEIP. Below is a summary of the variable remuneration schemes.

Employees are only eligible to participate in one of the short-term incentive plans. Variable remuneration as a percentage of total direct compensation shall not exceed 100% of salary.

The deferral periods for the awards are considered to be appropriate and proportionate to the nature of the Assurant business and to the length of the risk profile described above.

Non-European based Directors receive no variable remuneration based directly on the performance of Assurant Europe Group, their remuneration being linked to the performance of the wider Assurant, Inc. group.

Non-Executive Directors receive no variable remuneration.

Transactions with shareholders, with persons who exercise a significant influence on the undertaking, and with members of the administrative, management or supervisory body.

There were no material transactions with the shareholders of TWGE Group in 2020.

B.2 Fit and proper requirements

Assurant Europe Group must be able to demonstrate that it employs people who are fit and proper for the professional discharge of the responsibilities allocated to them, to assist in driving the appropriate culture in the business to minimise risk and to ensure sound and prudent management of the business.

Assurant Europe Group acknowledges that fitness and propriety across the business is essential for commercial reputation and customer confidence as well as regulatory compliance. This is ensured by

operating consistent procedures during recruitment, and ongoing employment, to be satisfied that an individual:

- will be open and honest in their dealings and is able to comply with the requirements imposed upon them (honesty, integrity and reputation)
- has the necessary knowledge, skills, and experience to carry out the function they are to perform (competence and capability)
- is financially sound (financial soundness).

The Group operates a robust recruitment process and carries out the appropriate due diligence on all candidates. Anyone who is being assessed to perform in a SMF or Key Function Holder (“KFH”) role is subject to a rigorous review of their fitness and propriety against the role requirements. All assessments with a fit and proper requirement are supported by an HR professional.

The following supporting evidence for every appointment is maintained: CV, Role Profile, and interview notes. For a prospective candidate to be passed as ‘fit and proper’, in addition to comprehensive interviews, additional checks include: credit checks, checks from the Disclosure and Barring Service (DBS) or Disclosure Scotland, or Access Northern Ireland, proof of qualifications, two references covering at least five years’ previous employment; and self-certification regarding Conflicts of Interest.

For appointments for role-holders based outside of the UK, similar checks are carried out locally which are aligned to appropriate legislation.

If the results of any screening are ambiguous and/or give cause for concern, the matter is raised with the prospective candidate to obtain a satisfactory explanation. Concerns are escalated to, and discussed with, the Senior European Compliance Officer, or the Chief Risk Officer. If screening concerns cannot be satisfactorily resolved, any offer of employment is withdrawn.

B.3 Risk management system including the own risk and solvency assessment

Risk Management System

TWGE Group employs an enterprise wide approach to its Risk Strategy in order to embed a comprehensive and consistent risk management methodology. The objective of TWGE Group’s Risk Strategy is to establish a rigorous Risk Management Framework to ensure that the principles of good risk management are embedded throughout Assurant.

To this end, the management of the organisation at all levels is required to be risk aware and understand that Risk Management is part of all employees responsibilities in delivering the business objectives in an efficient and effective manner in line with an agreed and established risk appetite and enterprise vision and values.

Risk Strategies

TWGE Group adopts a number of risk management strategies to ensure that the group’s Risk Appetite is not exceeded. The choice of strategy varies depending on the nature of the risk and related circumstances. These strategies include:

- Risk acceptance: the TWGE Group Board accepts risks that fall within the boundaries/limits defined in the risk appetite framework. Any risk falling outside the specified limits or boundaries is reviewed to ascertain if the risk appetite requires updating or if an exception should be granted.
- Risk reduction/minimisation: these activities generally relate to control and mitigation activities, and therefore this strategy may include, any or all of the following, the design of new process or accounting controls, contracting controls, changes in product design, improvement in a set of Terms and Conditions, or other changes designed to control and/or mitigate risk.
- Risk transfer: risk is transferred principally through reinsurance agreements. These may include, but are not limited to stop loss, excess of loss, quota share, or other such treaties. Other types of risk transfer can also be considered.
- Risk Avoidance: where an activity is outside the risk appetite of the TWGE Group, TWGE will seek to avoid exposure to that type of risk.

Process

TWGE Group works within the three lines of defence model and reinforces the requirement for first line management of risk, with oversight and challenge from the second line risk and compliance functions and third line internal audit function:

Enabling Risk Culture	Oversight	Board and Executive	<ul style="list-style-type: none"> • Establishes risk appetite and strategy • ARCC - Approves risk framework and challenges risk management function 	Risk Management Framework and Process Alignment
	3rd Line of Defence	Internal Advisory Services (Internal Audit)	<ul style="list-style-type: none"> • Provides independent assurance on the effectiveness of first and second line of defence functions 	
	2nd Line of Defence	Risk Management Function Compliance Function Actuarial Function	<ul style="list-style-type: none"> • Design, interpret and develop overall risk management framework • Overview of TWGE Group Risk Registers • Ownership of ORSA Process and Output • Monitor controls in place against key risks • Challenges risk mitigation and acceptance • Reports on Risk exposures, Issues, mitigations, and resolutions • Actuarial Function report and Underwriting/Reinsurance Opinions 	
	1st Line of Defence	Business / Functions	<ul style="list-style-type: none"> • Executive Risk Owners • Owner of the risk management process • Identifies, manages, and mitigates risks • Identifies, manages, and reports on Issues 	

TWGE Group has implemented a robust governance structure around Risk Management that is proportionate to the scale and complexity of the group.

Business areas are responsible for completing a Risk and Control Self-Assessment or RCSA which contributes to the Risk Register of the business. They update the risk registers on a periodic basis defined in the risk register process, using measurement techniques specified in Assurant's Risk Management Framework.

Management are given authority to manage risks to within the agreed risk appetite. The monitoring processes and controls that operate over the organisation will be complementary to the processes and controls used by the Risk organisation and its committees.

Own Risk and Solvency Assessment

As part of its risk management framework, TWGE Group conducts an annual Own Risk and Solvency Assessment (ORSA). This assessment considers the operating environment and wider risks to which TWGE Group is exposed and provides a forward-looking assessment of the potential risks and capital impacts, within the wider context of TWGE Group's business strategy.

The ORSA is completed and approved by the board annually and ad hoc ORSA's are completed when required in line with the ORSA policy.

The risk management processes, and systems of the TWGE Group are combined and there are no separate processes for its insurance entities. This includes the ORSA process. TWGE Group has obtained a waiver from the PRA allowing a single group ORSA process. This process covers all the necessary requirements for each SII insurance firm within the group, had it been performed on a standalone basis.

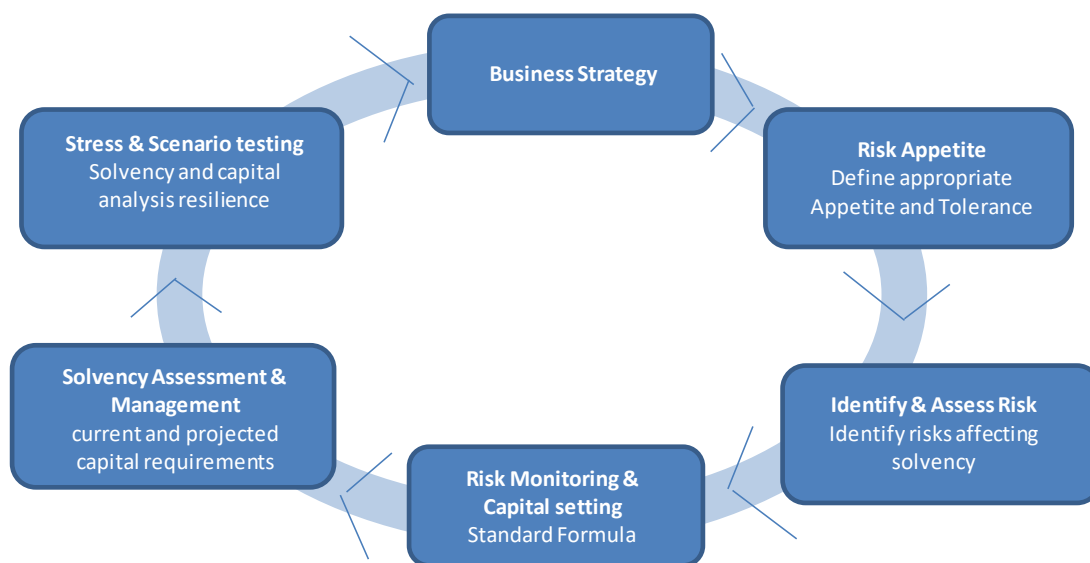
The ORSA is not separate to the Risk Management Framework ("RMF"), but an integral tool to describe the whole risk to the business and, by implication, the ability of the business to meet the funding requirements of its overall business plans including its on-going liabilities now and into the future.

The ORSA is a forward-looking analysis of the TWGE Group insurance entities' short and long-term risks, which is updated regularly to ensure sufficient own-funds to meet the entities' existing and future liabilities, through a combination of risk, capital and solvency projections.

In general the "ORSA process" is one of coordinating with many areas of the business to ensure that the information, data and calculations are available for reporting through to the Results and ensuring that key stakeholders are available to review and comment on the ORSA outputs.

The process is owned and operated by the Risk Function, which has access and continuing understanding and control of many of the key elements that make up the ORSA.

ORSA Process



B.4 Internal control

TWGE Group's internal control system, is designed to provide reasonable assurance that its reporting is reliable and compliant with applicable laws and regulations, and its operations are effectively controlled.

TWGE Group uses a three lines of defence principle. TWGE's general efforts to promote, foster and facilitate an organizational culture of sound and ethical business practices is the responsibility of the first line of defence, i.e. business management. Second line of defence functions help, support, and challenge the business management to meet that responsibility. Internal audit will provide independent assurance and is the third line of defence. TWGE's internal control system and three lines of defence model is further elaborated in policies, procedures and guidelines.

The Board is ultimately responsible for overseeing and maintaining the adequacy and effectiveness of risk management processes, practices and internal control systems. In practice, the oversight and management of these systems necessarily involves participation of the Board, the ARCC, senior management, Risk, Finance, Compliance, Legal, business managers, various management committees and Internal Audit. Primary responsibility for ensuring day-to-day oversight of the internal control system lies with the relevant Senior Manager Functions (SMFs) and Key Function Holders.

TWGE Group promotes the importance of appropriate internal controls by:

- ensuring that all personnel are aware of their role in the internal control system;
- ensuring a consistent implementation of the internal control systems across the company; and
- establishing monitoring and reporting mechanisms for decision making processes. The Risk Management and Controls section above includes a brief description of the internal control systems relating to the risk function.

Compliance

TWGE Group operates within a financial services' regulatory regime in Europe. The regulators define the standards required within the business via their rules and guidance, which cover key areas around

customer protection and sustainability - with expectations that these principles are embedded in the culture of the business, driven from the top of the organisation and managed via robust governance frameworks. All TWGE Group employees are required to have an awareness of the requirements on them within their role to ensure the business meets the standards required in both letter and spirit, with some Senior Management having specific responsibilities, accountabilities and obligations to the regulators.

Good compliance standards and risk management helps the business build trust with customers, and other stakeholders, and promotes a culture where positive individual behaviours ensure the customer is at the heart of the systems and controls which enable good customer outcomes and the identification/mitigation of poor practice.

TWGE Group's Compliance function's purpose is to ensure that the Group meets the regulatory requirements in the jurisdictions in which it does business. Through engagement with the business leaders and a variety of activities and processes to identify, assess, control, measure, mitigate, monitor and report compliance risks across the Group as a part of its oversight and administration of the Compliance Plan, the Compliance function ensures a strong regulatory compliance culture within the Group.

The function operates independently from the business and is part of TWGE Group's second line of defence, which specifically provides advice on regulatory requirements and assurance regarding the effectiveness of first line controls. It is led by the Chief Compliance Officer, Europe who reports directly to the International Compliance Officer of the parent group and has direct access to the Board and ARCC in order to assist with management of any conflicts of interest. The Chief Compliance Officer, Europe provides regular updates on the Compliance monitoring activity to the ELC and the Board (via the ARCC).

The Compliance function also owns and develops TWGE Group's relationships with key regulators, including the FCA and PRA, which includes taking a forward-looking view to manage regulatory change.

B.5 Internal audit function

Reporting directly to the Assurant Chief Audit Executive ("CAE") and to the ARCC, the Internal Audit Services ("IAS") function, led by the Head of Internal Audit for Europe (HoIA), is responsible for regularly assessing the adequacy of the internal controls system of TWGE Group, and reporting the findings to the Board (via the ARCC).

The bi-annual audit plan is prepared and submitted to the ARCC every six months for review and confirmation. Upon confirmation, IAS distributes the plan to Executive business leaders and executes the plan during the course of the audit plan period. Additionally, at IAS' discretion or at the request of the ARCC, or management, other unannounced audits may be completed.

IAS personnel report directly and solely to the Chief Audit Executive of Assurant, Inc., and the CAE reports directly to the Chair of the Assurant, Inc. Audit Committee; and administratively to Assurant's Chief Financial Officer.

The Internal Audit Charter defines the framework for the activities of the internal Audit function and is approved by the Assurant, Inc. Audit Committee.

The internal audit reporting structure and the charter allow IAS to be independent of the functions audited; and it provides IAS full, free, and unrestricted access to all operations, records, property, and personnel. Additionally, it provides the authority to allocate resources, set frequencies, select subjects, determine scope of work, and apply the techniques required to accomplish audit objectives.

Initially the entire risk universe is considered during annual audit planning and subsequent revisions to plan, the highest-risk items are included as risk-based audits. Certain processes, while not rising to a level of significant risk, are still included on a cyclical basis to ensure breadth of coverage over a span of time.

Secondly, risks associated to the audit are identified and their mitigation evaluated via an assessment of the design and operational effectiveness of key internal controls, information systems, governance, risk management, and financial reporting supplemented where necessary by a programme of testing, creating audit programs for every project.

Audit plan activities typically conclude with some form of communication (audit report, memo, or other testing result) addressed to appropriate management of not only the results of the activities, but also management's action plans for remediation and/or improvement. Depending on the scope of the engagement these actions could be in risk management, controls, or corporate governance with action plans obtained from appropriate management which are tracked by IAS until final completion as part of the IAS issues follow-up process.

Senior management have the opportunity to provide responses to audit findings, which are included in the final report, when that format is used to communicate results. The completed reports are made available to executive leadership, the ARCC and the AIZ Audit Committee.

B.6 Actuarial function

The actuarial function is responsible for calculating the technical provisions and claims reserves for TWGE Group, as well as calculating the SCR, MCR and ORSA capital on a regular basis. In addition to these key responsibilities, the actuarial function is also responsible for reviewing the appropriateness of insurance product pricing and contributing to the governance committees/forums, capital initiatives and regulatory returns where appropriate.

The function is led by the Chief Actuary. The Chief Actuary has the knowledge and experience, is appropriately qualified, and has the appropriate level of skill necessary to perform this function in accordance with applicable professional and technical standards.

The Chief Actuary coordinates the calculation of technical provisions, provides the Actuarial Function Report and provides opinions on the underwriting policy and reinsurance arrangements, and contributes to the effectiveness of the risk management system.

The Chief Actuary also provides quarterly and annual reports to the Board, via the ARCC, detailing the methodology, assumptions, and results of their work for approval, as well as fulfilling the 2nd line responsibilities of the role for the Actuarial Function Report. ARCC is responsible for challenging those assumptions and ensuring that they are appropriate and not unduly influenced by management. The Chief Actuary also has access to the independent non-executives to escalate any issues or concerns.

B.7 Outsourcing

TWGE Group is supervised on a group basis by the PRA. TWGE Group operates as part of the overall Assurant Europe Group. LGI and LGL have no employees and all services are provided by other Assurant Europe Group companies. The Board of TWGE Group, the European group parent, and of LGI and LGL are the same and as such these are not considered to be outsourced arrangements.

Many of TWGE Group's processes are part of wider Assurant, Inc. global activities and staff working and employed in the European business have responsibilities for the European organisation but also report up through the global enterprise structures. Similarly, there are employees of the Global enterprise who perform activities on behalf of the European business. These processes include IT services.

Where such activities relate to critical functions, including Internal Audit and Risk where the SIMFs are employees of the Assurant, Inc. group as described in the previous sections, those employees are also directly responsible to the European Board for activities performed on behalf of the European business and are therefore also not deemed to be outsourced arrangements.

The Group regularly makes use of third-party organisations to provide goods and services to the business in various areas. From time to time, Assurant Europe will choose to source services from third parties or from group companies that would normally be provided internally by the Group itself.

The rationale for this choice is frequently reviewed to make the business more efficient and/or bring innovation and new ideas into the business. However, while the Group can engage a third party to provide the service, the Group retains responsibility for ensuring that appropriate performance and quality standards are both set and achieved by the provider and that the services by design and performance deliver fair customer outcomes.

The Outsourcing policy sets out the standards and controls required for selection of providers of this type of arrangement as well as the requirements for ongoing management of these relationships to ensure adequate oversight and governance of performance of the services.

The Group Outsourcing policy ensures that the Group only outsource services and processes where the risks associated with the relationship and provision of services can be appropriately managed and the service provider (third party or intra-group) can meet our required customer and regulatory obligations and mitigate any risk exposure in the areas of concentration risk and operational risk. Furthermore, any consideration of outsourcing a function or activity will be subject to detailed consideration and a detailed business case requiring executive committee approval before proceeding.

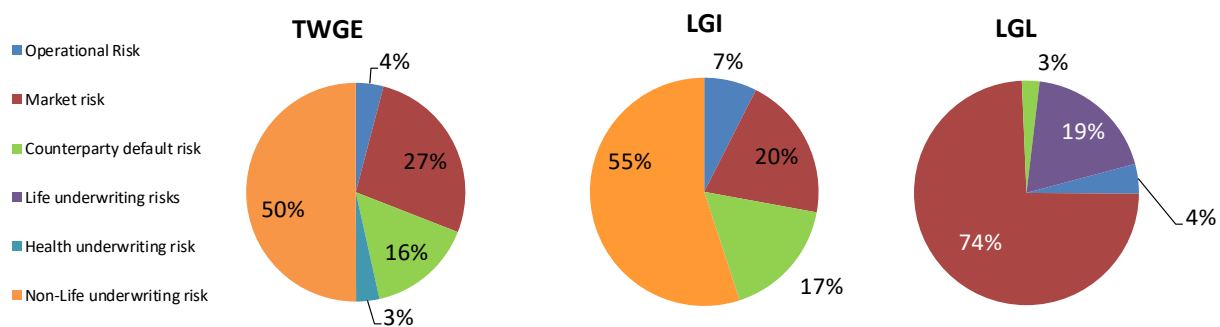
Outsourced function	Jurisdiction
Investment Management Services	UK, US
Administration and claims management	EU

B.8 Any other disclosures

None.

C Risk management

The main risks TWGE Group, LGI and LGL are exposed to are, underwriting risk followed by credit risk due to counterparty default. The charts below show the distribution of the SCR required for the Group and each SII insurer by risk module (excluding the diversification effects between the risk modules).



Each risk type is considered below in turn.

C.1 Underwriting risk

Underwriting Risk is defined as the financial and contractual risks involved when writing or administering insurance policies. Unmitigated, the risk exposure would have a large, material impact on the total risk exposure of TWGE Group.

Measures used to assess underwriting risk

Premium Risk, the risk that premiums are not sufficient to cover actual claims costs and expenses and to provide TWGE Group with an appropriate return for the risk taken:

- Expected premiums, claims and expenses (commissions and other acquisition costs, costs to service policyholders and fulfil claims and overheads) are projected three years ahead as part of the annual operating plan and forecast process. Variances between forecast and actual results are reviewed monthly by the senior management team and quarterly by the Board and actions identified and assigned.
- The impact of the 3-year plan on TWGE Group's, LGI's and LGL's future solvency and economic capital position is modelled through the annual ORSA process.
- All new business proposals are assessed by the Pricing team against target returns on capital and approved by a committee including representatives from Risk or Compliance.

Reserve Risk, the risk that claims reserves are insufficient to cover the actual costs of claims that have been incurred:

- In calculating the estimated cost of unpaid claims, TWGE Group uses a variety of estimation techniques, generally based upon statistical analyses of historical experience, which assumes that the development pattern of the current claims will be consistent with past experience. Allowance is made, however, for changes or uncertainties which may create distortions in the underlying statistics, or which might cause the cost of unsettled claims to increase or reduce

when compared with the cost of previously settled claims. Reserves were adjusted during the COVID-19 pandemic in 2020 to ensure that they were adequate to meet expected claims.

- The run-off of historic claims reserves is reported to the ARCC annually and the cost of any potential reserve increase is included in the annual ORSA process.

Underwriting risk exposure is also assessed and quantified in TWGE Group's Standard Formula solvency capital requirement calculation which is completed quarterly.

Material underwriting risks

Non-Life and Health Not Similar to Life Techniques

- TWGE Group issues non-life insurance policies through LGL with focus on the Auto (insured warranty and guaranteed asset protection) and A&T (consumer electronics and white goods accidental damage and extended mechanical or electrical breakdown warranty) markets.
- Fluctuation in the frequency and severity of insured events, both relating to policies that were underwritten in the period and to unexpired policies from previous periods, present the most material elements of underwriting risk for TWGE Group.
- In respect of non-life contracts, the business underwritten is generally low severity with limited exposure to catastrophe events. Although warranty policies are longer than 12 months in length, claims are reported, and decisions made quickly. Speed of payment of claims reduces the uncertainty surrounding the ultimate claim amounts and reduces the exposure to Reserve risk.
- The lockdowns across the UK and Europe in action to the Covid-19 pandemic led to a reduction in sales due to closure of dealerships.

Life and Health Similar to Life Techniques Business:

- LGL issued creditor policies, classified as Life business. LGL ceased writing of new policies in 2018. Its focus is to control insurance risk through appropriate claims control and through setting appropriate reserves. Following the transfer in November 2020, LGL has only a few in-force policies which are 100% reinsured to a third party.

Risk management

TWGE Group's underwriting and reserving policies applies to all companies within the TWGE Group. In general, the risk appetite of TWGE Group is to write high frequency, low severity business, or business where we have expertise to differentiate from competitors or complement non-insurance products.

TWGE Group has a range of contractual mitigations included within contracts. These include allowance for profit and loss shares with clients.

Due to the nature of the primary business lines insured, it is continually necessary to scan the horizon for emerging risks with regards to changes in customer behaviour and changes in technology. TWGE Group's commercial contracts contain controls to protect against any future change in the landscape.

Concentration of underwriting risk

TWGE Group's and insurance firms' policies are held by individuals across a number of clients and are not exposed to significant insurance concentration risk by location. TWGE Group does not have any material exposure to catastrophe risk.

Risk mitigations

TWGE Group can seek to use reinsurance treaties to limit underwriting exposure where it exceeds the limits set out in its Reinsurance policy. Any reinsurance treaty or negotiation of terms on existing treaties needs to comply with the requirements of the policy.

Two distinct types of reinsurance may be utilised:

as a mechanism for sharing risks with individual client groups for certain products as part of the relevant commercial relationship (“Client-based Reinsurance”); and,

for the purposes of broader risk and capital management (“Risk Management Reinsurance”).

TWGE Group will consider any level of risk transfer as is appropriate to the situation.

TWGE Group does not normally seek to utilise risk mitigation techniques other than reinsurance. Should situations arise where other risk mitigation techniques are considered or present a significant opportunity these will be subject to a full business case review and approval as set out in the policy.

TWGE Group shall only utilise reinsurance where it provides effective risk transfer and risk mitigation in TWGE Group’s solvency capital requirement calculations.

C.2 Market risk

Market risk is defined as the risk of loss or of adverse change in the financial situation resulting, directly or indirectly, from fluctuations in the level and in the volatility of market prices of assets, liabilities, and financial instruments.

Measures used to assess market risk

TWGE Group is exposed to market risk and exposures are monitored by the Treasury and Investment Forum and overseen by the ARCC. The factors that are likely to affect market risk include, but are not limited to, large fluctuations in, or changes to, interest rates, volatility in foreign exchange markets, sudden inflation/deflation, recession, conflict (war, terrorist attack), and political instability.

Management of the LGI and LGL investment portfolios is outsourced to the investment managers, which operate within the agreed mandates set in accordance with the risk appetite and subject to the prudent person principle. The TWGE Group Treasury function is responsible for monitoring the activities of the investment managers, as well as monitoring and reporting on performance. Material deviations from the mandate or expected risk appetite are escalated through the TWGE Group system of governance and to the Board (via the ARCC) if appropriate.

TWGE Group’s, LGI’s and LGL’s investment portfolio are modelled through the annual ORSA process. Market risk exposure is also assessed and quantified in TWGE Group’s Standard Formula solvency capital requirement calculation which is completed quarterly.

Material market risks

TWGE Group does not seek market risk as a means to increase revenue or profit. Market risk is a necessary aspect of managing the solvency of the business. TWGE Group is tolerant of market risk as a mechanism to fund policy liabilities and contribute to the growth of surplus and maintenance of capital requirements.

Included within market risk are:

Interest Rate Risk	The fair value of TWGE Group's portfolio of fixed income securities is inversely correlated to changes in the market interest rates. Therefore, if interest rates fall, the fair value of the portfolio would tend to rise and vice versa.
Currency Risk	<p>TWGE Group operates in the UK and in other European countries, via its insurers, branches and through Freedom of Service, and is also part of a wider United States group. Accordingly, its net assets at the group level are subject to currency risk.</p> <p>The primary foreign currency exposures are to Euro and United States Dollar. If the value of Sterling strengthens then the value of the non-Sterling net assets will decline when translated into Sterling.</p> <p>TWGE Group incurs currency risk in two ways:</p> <ul style="list-style-type: none"> • Operational currency risk - by holding assets and by underwriting liabilities in currencies other than the currency of the primary environment in which the business units operate (non-functional currencies) • Structural currency risk - by operating overseas branches where the currency of the primary environment differs to that of the principal business and being part of an international insurance group • Following the transfer in November, LGI and LGL only have business in the UK and Switzerland, and therefore their exposure to currency risk is now low.
Spread Risk	Spread risk does present a material risk to the business but is closely managed by the use of a suitably diverse investment portfolio.
Property Risk	TWGE Group, LGI and LGL had no exposure to property risk in the year ended 31 December 2020.
Equity Risk	TWGE Group and LGL had no exposure to equity risk in the year ended 31 December 2020. LGI recently invested in a small proportion of a subsidiary within the TWGE group.

Risk management

The investment portfolio is structured so that asset quality is a primary feature. As a result, the portfolio is limited to Government Bonds, Sovereign and Sub-Sovereign debt, Collateralised Securities, and investment grade Corporate Bonds which are actively traded.

Investments are required to be above investment grade (BBB-) at purchase. Those that fall below investment grade subsequently are investigated with subject matter experts and the costs of early exit are assessed against the risk of default.

The TWGE Group Board uses BlackRock to manage the investment portfolios of LGI and LGL respectively. TWGE Group's requirements for the management of its investment portfolio are stipulated in the Investment Management Agreement with the appointed investment manager.

The investment portfolio mandate reflects TWGE Group's risk appetite to mitigate spread risk, and investments are diversified by allocation and quality. The investment managers are given parameters against which they are measured quarterly.

Market risk to the investment portfolio is considered in real time. Risks to the value of investments are discussed quarterly with the investment managers.

Market prices of the assets held were affected by Covid-19 during 2020 with widening of credit spreads in Q2 leading to a reduction in market value. There were also a small number of downgrades of issues

held in the investment portfolio. In line with process, these were individually discussed with the asset managers and appropriate action taken. No defaults were experienced in the portfolio and the market value returned to previous levels during Q3.

Operational and structural currency risk is managed within TWGE Group by broadly matching assets and liabilities by currency. Currency balance sheets are prepared and reviewed by management quarterly. With the establishment of the new Dutch insurance companies within TWGE group during 2020, a significant proportion of the group's own funds are denominated in Euros and these are required to support and fund growth in the EU business.

Concentration of market risk

Concentration of market risk arises when too much exposure is held in assets which respond to similar risk factors. As noted above, TWGE Group seeks to diversify its market risk exposure and thereby limits concentration of market risk.

Prudent Person Principle

TWGE Group's investment practices incorporate the principle of 'Prudent Person'. Accordingly the Board requires that the investment manager appointed to manage the investment portfolio only invests in assets and financial instruments whose risks TWGE Group can properly identify, measure, monitor, manage, control and report, and appropriately take into account in the assessment of its overall solvency needs performed as part of the ORSA.

Risk mitigation techniques used for market risk

TWGE Group does not use any derivatives or other specific risk mitigation instruments to manage its market risk exposure.

C.3 Credit risk

TWGE Group, LGI and LGL are exposed to credit risk via:

- default or delay in payments due upon cash;
 - reinsurance counterparties failing to meet financial obligations or entering into restructuring arrangements that may adversely affect reinsurance recoveries; and
 - default or delay of repayment of loans and receivables.
- LGI and LGL are also exposed to credit risk in respect of amounts from other group companies

TWGE Group considers the credit risk of holding assets in interest bearing investments as part of market risk. Refer to the market risk section above for further information.

Measures used to assess credit risk

Exposures to all counterparties are analysed each quarter and assessed and quantified in TWGE Group's Standard Formula solvency capital requirement calculation. The output from the resulting analysis is presented to the ARCC, detailing any material changes from the previous period.

Material credit risks

TWGE Group's maximum exposure to credit risk is represented by the values of financial assets included in the balance sheet at any given point in time. See also section D1 for details of the financial assets for TWGE Group, LGI and LGL at the reporting period end.

Risk management

TWGE Group holds cash balances with a number of banks within Europe but diversifies its exposure to ensure that any bank failures do not materially impact liquidity.

Holdings must follow the Credit Risk Policy, which requires cash holdings to be held in counterparties classified as investment grade or above by the main ratings agencies of Moody's, Fitch and/or S&P.

Third party reinsurers are required to be credit scored at 'A' (or equivalent) by two out of three of the main rating agencies (Fitch, Moody's or S&P) or be SII regulated in the EU, and in compliance with their solvency capital requirements, in order to be accepted unless appropriate collateral is provided to mitigate the exposure as laid out in the Reinsurance Policy.

TWGE Group extends payment terms to clients and will have significant amounts due from clients from time to time.

Concentration of credit risk

Balances outstanding with clients who collect premiums on TWGE Group's behalf generally represent the biggest credit exposures outside of cash holdings, but these can vary significantly, not only from client to client, but from time to time. These amounts are monitored on a monthly basis.

Investments in structured entities - collateralised securities and money market funds

TWGE Group has some exposure to collateralised securities through its investment fund which is managed by external specialist investment managers and exposure is controlled through the investment management agreement.

The use of these products allows the TWGE Group to broaden the diversification of its investment portfolio in a cost-efficient manner.

Risk mitigation techniques used for credit risk

TWGE Group does not use any specific risk mitigation techniques in respect of credit risk.

C.4 Liquidity risk

Liquidity risk is defined as the risk that TWGE Group will have insufficient liquid assets available to meet liabilities as they fall due.

Measures used to assess liquidity risk

Liquidity risk is managed by TWGE Group's Treasury management team. Future working capital and regulatory capital requirements are forecast monthly. The TWGE Group Board conducts stress testing scenarios to examine the effect on liquidity levels of various adverse business conditions.

Material liquidity risk

TWGE Group's exposure to liquidity risks is related to its ability to convert and access its assets, and in particular deposits and cash and cash equivalents, its bond portfolio and its collective investment fund (money market) holdings.

The TWGE bond portfolio primarily comprises a mixture of UK and European government securities and corporate bonds with investment grade ratings. All the securities are in active markets and should be easily convertible into cash.

Deposits other than cash equivalents comprise short term, up to 30-day bank deposits which are accessible in shorter timescales if necessary. Early access would only result in the loss of more favourable interest returns.

Risk management

TWGE Group holds significant cash balances with a number of banks within Europe but diversifies its exposure to ensure that any bank failures do not materially impact liquidity. Bank cash holdings must follow the liquidity and concentration requirements set out in the Credit Risk Policy.

TWGE Group seeks to maintain assets in classes which can be realised into cash easily with minimal impact on asset valuation. All investible assets should be readily realisable and convertible into cash.

Concentration of liquidity risk

TWGE Group has taken action to diversify its asset portfolio, accurately forecast cash flow and future liabilities and maintain access to funding from its US parent in order to mitigate liquidity risk.

Risk mitigation techniques used for liquidity risk

TWGE Group does not use any specific risk mitigation techniques in respect of liquidity risk.

Expected Profit in Future Premium

As required by Article 260(2) of the SII Directive, TWGE Group calculated the amount of expected profit in future premiums included in the calculation of best estimate technical provisions.

At the end of the reporting period the amount of expected profit in future premiums was as below:

Expected profit in future premiums £'000's	TWGE Group	LGI	LGL
As at 31 December 2020	7,179	-	-
As at 31 December 2019	751	1,590	-

C.5 Operational risk

TWGE Group is exposed to operational risk, which is defined as the risk of loss resulting from inadequate or failed internal processes, people, and systems or from external events. This includes the failure of key outsourcing arrangements, business disruption, fraud, and loss of key management.

This definition also includes legal risk and reputational risk, as the Group considers reputational risk critical to its franchise and therefore has adopted this broad definition of operational risk.

Measures used to assess operational risk

Operational risks are captured through TWGE Group's risk register and risk reporting processes as part of the Risk Management Framework.

In assessing capital required in respect of operational risk the Standard Formula SCR uses earned premium and reserves as a proxy for exposure to operational risk. This is a different approach to that adopted in the TWGE Group ORSA model where individual operational risks are identified and quantified by use of the risk registers. The impact of operational risk on the business is also assessed through the stress and scenario testing carried out as part of the ORSA process.

Material operational risk

TWGE Group provides products to many individuals through direct brands, through networks of indirect dealers and under clients' own branding. It is critical to the success of the business, and in order to retain existing clients and attract new clients, that client and customer expectations in terms of service and product performance are met and that customer service is central to the operation. Service levels and other key indicators in both the customer contact centres and claims fulfilment supply chain are monitored closely by management to ensure that they continue to be met and that any issues that arise are dealt with. TWGE Group also continues to innovate new products and enhancements to existing products to improve and add value to the offering to clients and their customers.

Clients may be lost due to failure to meet service levels but also clients review and put contracts to a competitive tender process periodically (usually between 3 to 5 years depending on the length of the original contract) where service and product quality are key factors. Failure to meet the expectations of both clients and their customers or competitor action during a tender period could result in the loss of that client and have a material impact on the business.

As a result of the Covid-19 pandemic, much of the operations has moved to working from home, increasing the reliance on IT systems and risk of fraud and cyber attacks. The change in working location has been managed well across the enterprise with local considerations reflected in the actions undertaken. This position is continually monitored with the focus being to protect customers and employees.

Risk management

TWGE Group has established policies, processes, and controls to manage and mitigate its key operational risks.

The process through which TWGE Group's operational risk universe is determined, and subsequent estimates of frequency and severity are assessed is captured in the Operational Risk Policy. This process safeguards the ongoing improvement of the control environment and ensures that operational risk is identifiable and mitigated as the Group continues to grow.

Risk mitigation techniques used for operational risk

TWGE Group has a comprehensive insurance programme that provides protection against the majority of material operational risks e.g. property cover, business interruption etc. There are no other specific risk mitigation techniques applied in respect of operational risk.

C.6 Other material risks

Climate Change

Climate change spans other risk types but can be roughly attributed to a changing planet, regulation, technology changes and consumers preferences. Assurant has risk mitigating practices in place in order to deal effectively with these changes. The impact of climate change continues to be monitored.

COVID 19

TWGE Group is part of the Assurant, Inc. group. As a global organisation, Assurant has been actively monitoring the developments of the rapidly evolving situation resulting from COVID-19. Throughout this period of uncertainty, Assurant has acted swiftly and deliberately to safeguard employees, customers, and business operations in line with Assurant values.

COVID-19 has caused disruption to the TWGE group in terms of business volumes due to temporary closure of client distribution channels such as retail stores and dealerships. At the start of the outbreak a number of scenarios impacting across the risk profile were considered, Whilst the pandemic affected the risk profile by means of reduced business volumes, changes in claims profile and movements in market values of investments, these were managed effectively.

Assurant implemented a ban on business travel and established work-from-home protocols for employees that are able to do so. For those employees that need to work in our global facilities, Assurant continues to enforce safety and hygiene protocols, such as social distancing, per the guidelines of the Centres for Disease Control and the World Health Organisation, to safeguard our employees.

Communication throughout this time of uncertainty has been paramount. In addition to communicating with our employees, Assurant has been in direct and regular contact with clients, who also are experiencing the challenges of COVID-19, to ensure we do the utmost to support them and their end-consumers.

Beyond the needs of its employees and customers, Assurant also has been active in maintaining our support within local communities by delivering on its charitable contributions and commitments.

C.7 Stress testing and sensitivity analysis

Stress and scenario testing are fundamental parts of TWGE Group's risk framework and is conducted in detail within our Own Risk and Solvency Assessment (ORSA) process. Stress testing is based on a specific set of stresses applied to the business that quantify impact on the P&L and regulatory solvency that cover the spectrum of risk types to which the group is exposed. The stress test results focus on the impact on:

1. Own Funds;
2. Impact on SCR;
3. Resulting solvency margin

Furthermore, stress testing provides comfort in the assessment of the SCR, ensuring that it remains appropriate and suitable against plausible stressed situations, by not fully exhausting capital above policy holder protection levels.

The 2020 analysis shows that the most significant plausible yet severe stress for the TWGE group is a reinsurance default of the main (quota share) reinsurance arrangement leading to an increase in the future net earned premium and thus an increase in the forecast SCR. Management and the Board consider this stress as significant but plausible.

The test assumed that there was an instantaneous default of the reinsurer in year one. The impact is an increase in the SCR of around £5m per year with a resultant reduction in solvency ratio over the planning period.

TWGE Group manages its solvency ratio above 100% and uses the results of the stress testing to aid an appropriate level of buffer i.e. capital in excess of the requirement to be held. This is a key element of TWGE Group's capital management process. As such TWGE Group is able to withstand each of the stresses and scenarios identified above over a 1-year time horizon.

Reverse Stress Testing (RST) considers extreme situations that could render TWGE Group's business unviable and works backwards, analysing the triggers and associated controls that would mitigate against such an event.

TWGE Group has a number of management actions that can be implemented to address adverse situations.

C.8 Any other disclosures

There are no other matters to be disclosed.

D Valuation for Solvency Purposes

LGI and LGL prepare financial statements under UK generally accepted accounting principles (“UK GAAP”). No consolidated financial statements are prepared for the group as TWGE Group has taken advantage of the exemption from preparing consolidated financial statements, under the Companies Act 2006 Part 15 Section 401, as the results of the TWGE group are consolidated in the financial statements of the ultimate parent undertaking Assurant, Inc., which are publicly available.

Reference to “financial statements” below should be understood to refer to audited UK GAAP financial statements in respect of LGI and LGL and to unaudited UK GAAP financial statements in respect of TWGE Group.

Individual assets and liabilities are recognised and valued separately unless a legal right of set-off exists and the assets and liabilities will be settled on a net basis.

All valuations are made on the basis that TWGE Group, LGI and LGL are going concerns. The Directors have considered the impact of COVID-19 on the operations and going concern assertion.

D.1 Assets

The material classes of assets shown on the SII Balance sheets, the SII values and values for the corresponding assets shown in the corresponding proforma or audited financial statements are summarised in the table below:

As at 31 December 2020 £'000's	Solvency II Balance Sheet			Financial Statements		
	TWGE Group	LGI	LGL	TWGE Group	LGI	LGL
Goodwill & Intangible Assets	-	-	-	12,282	-	-
Deferred acquisition costs	-	-	-	57,284	29,034	-
Deferred tax assets	2,322	369	-	2,322	-	-
Property, plant & equipment held for own use	1,939	-	-	444	-	-
Investments, comprising:	204,113	67,212	6,402	202,774	66,751	6,395
Bonds comprising:	193,939	60,346	1,648	193,458	59,870	1,641
<i>Government Bonds</i>	8,571	7,224	1,347	8,536	7,195	1,341
<i>Corporate Bonds</i>	185,368	53,122	300	184,922	52,675	300
<i>Collateralised securities</i>	-	-	-	-	-	-
Equities	385	2,655	-	393	2,712	-
Collective Investments Undertakings	6,371	1,617	4,754	6,371	1,617	4,754
Deposits other than cash equivalents	3,418	2,594	-	2,552	2,552	-
Loans and mortgages	-	-	-	-	-	-
Reinsurance recoverables	10,668	5,187	5	34,852	14,679	9
Deposits to cedants	-	-	-	-	-	-
Insurance and Intermediaries receivables	46,709	15,442	576	79,268	32,435	576
Reinsurance receivables	1,674	1,322	-	1,681	1,350	-
Receivables (trade, not insurance)	15,874	17,831	283	2,556	1,472	285
Cash and cash equivalents	58,676	6,435	390	58,691	6,552	390
Other assets	-	-	-	2,986	543	7
Total assets	341,974	113,798	7,657	455,139	152,816	7,662

As at 31 December 2019 £'000's	Solvency II Balance Sheet			Financial Statements		
	TWGE Group	LGI	LGL	TWGE Group	LGI	LGL
Goodwill & Intangible Assets	-	-	-	10,644	-	-
Deferred acquisition costs	-	-	-	61,783	76,337	-
Deferred tax assets	3,859	1,479	-	3,859	1,347	-
Property, plant & equipment held for own use	2,417	-	-	489	-	-
Investments, comprising:	185,930	177,125	8,805	184,727	175,968	8,760
Bonds comprising:	165,590	158,303	7,287	164,400	152,493	7,242
<i>Government Bonds</i>	37,359	35,016	2,342	37,016	34,695	2,321
<i>Corporate Bonds</i>	127,969	123,024	4,945	127,384	117,797	4,921
<i>Collateralised securities</i>	263	263	-	-	-	-
Equities	403	403	-	412	5,077	-
Collective Investments Undertakings	8,914	7,397	1,518	8,914	7,397	1,518
Deposits other than cash equivalents	11,022	11,022	0	11,001	11,001	0
Loans and mortgages	-	-	-	-	-	-
Reinsurance recoverables	18,131	18,123	8	48,707	48,698	8
Deposits to cedants	-	-	-	-	-	-
Insurance and Intermediaries receivables	6,626	50	5	42,256	23,183	5
Reinsurance receivables	0	0	-	1,809	1,809	-
Receivables (trade, not insurance)	7,440	3,680	334	3,035	1,848	334
Cash and cash equivalents	49,589	4,532	176	49,605	4,533	176
Other assets	-	-	-	2,605	1,195	45
Total assets	273,992	204,989	9,327	409,518	334,918	9,328

Goodwill and Intangible Assets

On the SII balance sheet goodwill and intangible assets are valued at zero.

In the financial statements, goodwill represents the excess of acquisition costs over the net fair value of identifiable assets acquired and liabilities assumed in a business combination. The cost of the acquisition is the amount of cash paid and the fair value of other purchase consideration. Other intangible assets are initially recognised at cost.

Goodwill and other intangibles are amortised in the financial statements over the expected useful economic lives and tested for impairment at least annually.

Unlisted Equities

TWGE Group's unlisted equities are held at fair value on the SII balance sheet. In the financial statements the investments are held at the lower of cost and net realisable value.

Deferred acquisition costs

The table above includes deferred acquisition costs, which are shown as a separate asset in the financial statements. In the financial statements acquisition costs comprise all direct and indirect costs arising from the conclusion of insurance contracts. Acquisition costs are deferred to the extent that they are recoverable out of future revenue margins and are amortised in accordance with the pattern of emergence of future related margins.

Under SII deferred acquisition costs are valued at zero.

Deferred tax assets

Deferred tax arises from timing differences that are differences between taxable profits and total comprehensive income. These timing differences arise from the inclusion of income and expense in tax assessments in periods different from those in which they are recognised in the financial statements.

Deferred tax is recognised on all timing differences at the reporting date except for certain exceptions. Unrelieved tax losses and other deferred tax assets are only recognised when it is probable that they will be recovered against the reversal of deferred tax liabilities or other future taxable profits.

Deferred tax is measured using tax rates that have been enacted or substantively enacted by the period end and that are expected to apply to the reversal of the timing difference.

Deferred tax assets are recognised on the same basis for SII and in the financial statements. However, valuation differences between SII and the financial statements, upon which the tax is calculated, for technical provisions and in respect of other assets and liabilities give rise to a reduction in the overall deferred tax assets.

The deferred tax assets arise due to net operating losses brought forward from prior years for tax purposes that are available to offset against future taxable profits. Assurant Europe Group reviews the likelihood of recovery of the deferred tax assets based on the expected profitability over the business planning horizon and with due regard to known changes in respect of the relevant tax regulation over that period.

Property, plant, and equipment held for own use

Property, plant, and equipment is held at depreciated cost in the financial statements. For SII, property, plant and equipment has been valued at net book value. Property leases have been recognised for Solvency II purposes at their right of use value as at year end.

Investments and Loans and mortgages

TWGE Group measures its investments at fair value on the SII balance sheet. The Group uses an exit price for its fair value measurements. An exit price is defined as the amount received to sell an asset or paid to transfer a liability in an orderly transaction between market participants at the measurement date.

Fair values of financial instruments traded in active markets are based on quoted bid prices on the balance sheet date. A market is regarded as active if quoted prices are readily and regularly available from an exchange, dealer, broker, industry group, pricing service, or regulatory agency, and those prices represent actual and regularly occurring market transactions on an arm's length basis. If listed prices or

quotations are not available, fair value is determined by reference to prices for similar instruments, quoted prices or recent transactions in less active markets, or internally developed models that primarily use, as inputs, market based or independently sourced parameters. All investments are valued based on quoted prices. A consistent valuation method was applied across all investments.

The difference between the SII value of investments in the table above is due to a difference in the classification of accrued investment income, which is recognised in investments for SII and Other assets in the financial statements.

Reinsurance recoverables

Reinsurance recoverables are valued according to the SII technical provision principles as explained in Section D2.

Deposits to cedants, insurance and Intermediaries receivables and reinsurance receivables

Receivables are measured at the undiscounted amount of the cash or other consideration expected to be received, net of any allowance for impairment.

Cash and cash equivalents

Cash and cash equivalents are recognised at fair value which is not considered to be materially different to cost.

Other Assets

Prepaid expenses and advance commissions represent the deferral of expenses paid for accounting purposes until they have been deemed to be consumed. In the SII balance sheet these assets are valued at zero unless the Group has a contractual ability to recover all or part of the asset from the third party in result of the termination of the arrangement. Where the group has such ability, the assets are recognised at the contractual amount recoverable less any allowance for impairment. These assets are recognised at amortised cost in the financial statements.

As noted above under “Investments and Loans and mortgages”, accrued investment income is reported as part of Other Assets in the financial statement but is included in the valuation of the related investment for SII reporting.

Any other assets are valued at fair value that is not considered to be materially different to the amortised cost basis as recorded per the financial statements.

Changes to the recognition and valuation bases

There have been no material changes to the recognition and valuation bases in the reporting period.

D.2 Technical provisions

Results

TWGE Group's technical provisions by material line of business as at 31 December 2020 are set out in reporting templates 12.01.02 Life and Health SLT Technical Provisions (for LGI and LGL) and also 17.01.02 Non-Life Technical Provisions (LGI and LGL).

As at 31 December 2020 £'000's	Fire and other damage to property*	Miscellaneous financial loss	Income protection	Health	Life	Total
TWGE Group						
Gross best estimate	16,137	36,249	6	28,599	2,207	83,197
Reinsurance recoverable	(4,066)	(6,437)	-	(143)	(22)	(10,668)
Net best estimate	12,071	29,811	6	28,456	2,185	72,529
Risk margin	1,105	3,828	1	2,941	40	7,915
Total technical provisions	13,176	33,639	7	31,397	2,226	80,445
LGI						
Gross best estimate	7,011	16,900		9		23,911
Reinsurance recoverable	(1,666)	(3,521)		-		(5,187)
Net best estimate	5,345	13,379		9		18,724
Risk margin	688	1,721		1		2,409
Total technical provisions	6,033	15,100		10		21,133
LGL						
Gross best estimate				18	355	373
Reinsurance recoverable				(9)	5	(4)
Net best estimate				9	360	369
Risk margin				-	20	20
Total technical provisions				9	380	389

As at 31 December 2019 £'000	Fire and other damage to property*	Miscellaneous financial loss	Income protection	Health	Life	Total
TWGE Group						
Gross best estimate	12,519	50,061		26,576	1,844	91,001
Reinsurance recoverable	(2,532)	(10,514)		(5,085)	-	(18,131)
Net best estimate	9,988	39,547		21,491	1,844	72,870
Risk margin	687	2,725		1,324	24	4,760
Total technical provisions	10,674	42,272		22,815	1,868	77,630
LGI						
Gross best estimate	14,117	56,448		25,540		96,105
Reinsurance recoverable	(2,532)	(10,514)		(5,077)		(18,123)
Net best estimate	11,586	45,934		20,463		77,982
Risk margin	687	2,725		1,323		4,735
Total technical provisions	12,273	48,658		21,786		82,717
LGL						
Gross best estimate				55	1,795	1,850
Reinsurance recoverable				(8)	-	(8)
Net best estimate				47	1,795	1,842
Risk margin				1	24	25
Total technical provisions				48	1,819	1,866

*direct and proportional reinsurance

Bases, methods, and main assumptions

Under Solvency II, liabilities must be valued at the amount for which they could be transferred between knowledgeable parties.

The technical provisions are calculated as the sum of the best estimate provision and a risk margin as required by the Solvency II directive. The best estimate is the probability weighted mean average of all future cash-flows and the risk margin is the cost of providing the solvency capital requirement necessary to support the liabilities.

The liabilities valued in the technical provisions are those associated with existing contracts at the valuation date. Under Solvency II, contracts must be valued if there is a legal obligation to provide cover even if this is before the commencement date of the policy which is different to the approach under UK GAAP.

To calculate the technical provisions for each entity, the business is split into a number of homogeneous risk groupings referred to as model points based on the underlying currency, geographic segment, and line of business.

The LGI technical provisions are calculated using a bespoke model built using the Igloo platform. This predicts the expected cashflow for each model point separately for each future year (or 12-month period following the calculation date) until all existing contracts have expired.

Where relevant, management actions should be included in the calculation of technical provisions. Management actions for LGI would include the cancellation of a block of business but this could only occur at the end of a policy period so will not impact the calculation of the Technical Provisions.

The expenses underlying the calculation of the best estimate are based on the assumption that LGI will continue to write new business. Overhead expenses are included in the calculation but are restricted to those which are related to the support of existing policyholders. Expenses which are directly related to existing business include administration expenses (including salaries, IT, and property costs) investment expenses, acquisition expenses, including commission, and claims handling expenses.

Expenses are projected as for the cashflow projections and allocated between model points and currency and between earned and unearned exposure.

The inwards and outwards cashflows included in the technical provisions are:

Inwards cashflows:

- Future Premiums for policies past their start date
- Future premium for policies not yet on risk but with a legal obligation
- Recoverable for salvage and subrogation
- Reinsurance recoverables

Outwards cashflows:

- Claims payments payable to policyholders or beneficiaries
- Surrender Value payments
- Expenses incurred in servicing contracts
- Future Reinsurance premiums
- Profit Share payments

The best estimate is split between premiums provisions and claims provision and the results are shown separately. Premium Provisions are established in respect of unearned exposure and Claims Provisions are established in respect of earned exposure.

Premium Provisions are calculated by projecting the cash flows relating to claims which will occur after the calculation date. Future premiums expected on existing policies can be allowed for as cash in-flows when calculating Premium Provisions.

The only future premiums included in the technical provisions are those associated with direct debit premiums that are yet to be collected.

If the cash in-flows exceed the cash out-flows, then the Premium Provisions may be negative. This only occurs where there is profitable future premium which can be included in the premium provision calculation.

The standard approach to calculate the gross undiscounted claims cash flow in each future 12-month period is to project the future claim payments in each year by applying a claim payment pattern to the total projected incurred claims. The total projected incurred claims are calculated either as the

expected number of claims multiplied by the expected average claim amount or as the expected loss ratio multiplied by the gross earned premium.

Claims Provisions are calculated by projecting the cash flows relating to claims which have occurred prior to the calculation date. The total expected future payments for each model point are calculated using the existing actuarial claims triangulation methods which are used to calculate the claims reserves and incurred but not reported (IBNR) reserves in the UK GAAP financial statements. The cash-flow projections include all future payments relating to these claims.

Reinsurance cash flows are calculated by applying the reinsurance treaties for each model point. The reinsurance treaties in place are simple quota share treaties.

The Gross Best Estimate is the discounted Gross Premium Provision plus the discounted Gross Claim Provision, discounted using the EIOPA yield curve appropriate for each currency. The Net Best Estimate is the Gross Best Estimate minus the discounted Reinsurance Premium Provision less the discounted Reinsurance Claim Provision.

The risk margin is the cost of providing an amount of eligible own funds equal to the Solvency Capital Requirement necessary to support the liabilities.

The Risk margin is the present value of the SCR discounted using the risk-free rate multiplied by the Cost of Capital rate of 6%.

The SCR at the valuation date is calculated using the standard formula. The calculation of the SCR assumes that the existing portfolio including all current reinsurance remains the same. The SCR for Risk Margin covers underwriting risk for the existing portfolio (i.e. no new business), the credit risk associated with reinsurance, intermediaries and policyholders and operational risk.

The calculation of the SCR for the Risk Margin calculation follows the same methodology as that used to calculate the SCR.

The SCR for future time periods, until the business is fully run off, is approximated based on the assumption that the SCR is proportional to the discounted cash flow excluding risk margin in future years.

The SCR for Risk Margin is calculated for LGI as a whole and is then allocated to line of business in order to be added to the discounted best estimate to calculate the total Technical Provision.

The total Risk Margin is allocated to line of business in line with the SCR calculated for each line of business.

Risk Margins are not required in respect of reinsurance recoverable as risk margins are calculated at a net rate.

Data

The data underlying the calculation of the technical provisions is either taken from the operating systems or from financial statements and financial forecasts. The actuarial function extracts the information and conducts a detailed reconciliation of the data with that held on the source systems and the financial ledger. The process used by the actuarial function to ensure that the data underlying the calculation of the technical provisions is complete, accurate and appropriate for use is subject to external scrutiny as part of the audit process.

Differences between Solvency II and the valuation bases for financial statements

The most material assumptions used in the calculation of the Solvency II best estimates are based on existing Assurant processes which are the same as those used in the preparation of the financial statements.

The methodology for the calculation of the premium provision under Solvency II is fundamentally different to that used in the financial statements. The Premium provision is based on the probability weighted average of future cashflows related to policies within contract boundaries whereas UK GAAP unearned premium reserve is an allocation of premium income to the remaining time to expiry of the insurance contracts already issued. Though not directly comparable the main difference arises due to the recognition of future profit on issued policies and expected profit in future premiums.

Under Solvency II the best estimate technical provisions are discounted, but these are undiscounted under UK GAAP.

No Risk Margin is recognised under UK GAAP.

Under Solvency II additional adjustments are made to allow for Events Not in Data (ENIDs), an estimate for unknown liabilities not yet captured by the actuarial estimates.

The main differences between technical provisions as shown in the financial statements and the Solvency II technical provisions are shown in the chart below:

The main differences between technical provisions as shown in the financial statements and the Solvency II technical provisions are shown in the table below:

All lines of business	TWGE Group	LGI	LGL
As at 31 December 2020 £'000	Unaudited	Audited	Audited
Technical provisions per financial statements*	124,832	17,712	389
Inclusion of debtors/creditors not yet due	(16,161)	-	
Adjustment to best estimate claims reserves	(42,459)	(47)	
Events not in data	642	642	
Difference in expense assumptions	7,083	1,666	
Discounting	760	17	
Embedded profit	(1,266)	(1,266)	
Risk Margin	7,014	2,409	
Technical provisions per Solvency II balance sheet	80,445	21,133	389

All lines of business	TWGE Group	LGI	LGL
As at 31 December 2019 £'000	Unaudited	Audited	Audited
Technical provisions per financial statements*	75,145	74,632	1,866
Inclusion of debtors/creditors not yet due	(3,217)	7,484	
Adjustment to best estimate claims reserves	(1,508)	(1,508)	
Events not in data	1,474	1,474	
Difference in expense assumptions	8,261	4,495	
Discounting	(41)	(41)	
Embedded profit	(7,219)	(8,553)	
Risk Margin	4,735	4,735	
Technical provisions per Solvency II balance sheet	77,630	82,717	1,866

Matching Adjustment

TWGE Group has not applied the matching adjustment referred to in Article 77b of Directive 2009/138/EC.

Volatility adjustment

TWGE Group has not used the volatility adjustment referred to in Article 77d of Directive 2009/138/EC.

Transitional risk-free interest rate-term structure

TWGE Group (Including LGI and LGL) has not applied the transitional risk-free interest rate-term structure referred to in Article 308c of Directive 2009/138/EC.

Transitional deductions

TWGE Group has not applied the transitional deduction referred to in Article 308d of Directive 2009/138/EC.

Reinsurance

Reinsurance recoverables represent the net discounted cash flow expected to be received from TWGE Group's reinsurers. TWGE Group utilises a variety of reinsurance treaties, primarily of a quota share nature, in order to share risk by ceding back to a client's captive or to remove risks underwritten that are outside of the group's appetite.

Material changes in the relevant assumptions made in the calculation of technical provisions

No material changes have arisen in the assumptions made in the calculation of technical provisions in the period.

D.3 Other liabilities

Solvency II Other Liabilities	TWGE Group	LGI	LGL
As at 31 December 2020 £'000			
Insurance creditors, reinsurance creditors and trade payables.	90,007	37,895	2,858
Subordinated loan notes included in basic own funds	-	-	-
Run Off Provision	2,072	-	-
Other liabilities	12,225	-	-
Total Other Liabilities	104,304	37,895	2,858

Solvency II Other Liabilities	TWGE Group	LGI	LGL
As at 31 December 2019 £'000			
Insurance creditors, reinsurance creditors and trade payables.	66,248	13,382	2,281
Subordinated loan notes included in basic own funds	-	-	-
Other liabilities	-	-	-
Total Other Liabilities	66,248	13,382	2,281

Financial Statements Other Liabilities

	TWGE Group	LGI	LGL
As at 31 December 2020 £'000			
Insurance creditors, reinsurance creditors and trade payables.	89,624	35,831	2,858
Subordinated loan notes included in basic own funds	-	-	-
Run off provision	2,072	-	-
Other liabilities	23,451	11,518	-
Total Other Liabilities	115,147	47,349	2,858

Financial Statements Other Liabilities

	TWGE Group	LGI	LGL
As at 31 December 2019 £'000			
Insurance creditors, reinsurance creditors and trade payables.	89,016	45,974	2,686
Subordinated loan notes included in basic own funds	-	-	-
Other liabilities	31,487	23,019	1
Total Other Liabilities	120,503	68,993	2,687

Deferred tax liabilities

Deferred tax arises from timing differences that are differences between taxable profits and total comprehensive income. These timing differences arise from the inclusion of income and expense in tax assessments in periods different from those in which they are recognised in the financial statements.

Deferred tax is recognised on all timing differences at the reporting date except for certain exceptions.

Deferred tax is measured using tax rates that have been enacted or substantively enacted by the period end and that are expected to apply to the reversal of the timing difference.

Deferred tax liabilities are recognised on the same basis for SII and in the financial statements. However, valuation differences between SII and the financial statements, upon which the tax is calculated, for technical provisions and in respect of other assets and liabilities give rise to differences between the amounts reported.

The deferred tax liability in the TWGE Group proforma consolidated financial statements relates to deferred tax recognised in respect of goodwill and intangibles arising on consolidation that are being amortised to the UK GAAP profit and loss account over those assets' useful economic lives of up to 10 years. As the assets only arise on consolidation, they are not taxable and therefore give rise to a timing difference. Under SII the goodwill and intangible assets are valued at zero and therefore no deferred tax timing difference arises.

Deferred tax liabilities in the TWGE Group SII balance sheet arise due to the tax impact of the other SII valuation adjustments.

Insurance and Intermediary Payables, Trade Payables and Other Liabilities

For SII, liabilities other than technical provisions are valued at the amount for which they could be transferred, or settled, between knowledgeable willing parties in an arm's length transaction. When valuing liabilities, no adjustment to take account of the own credit standing of the issuer is made. In the financial statements, liabilities are valued at amortised cost.

There are no material differences between the valuation bases, methods and main assumptions used by TWGE Group, LGI or LGL for the valuation for solvency purposes and those used for the valuation in the relevant financial statements. The small differences in respect of Other Liabilities relates to reinsurance deferred acquisition costs which are valued at zero for SII (refer also to disclosure in respect of deferred acquisition costs in D.1.)

Other liabilities included above relate to accruals, deferred income, and other amounts payable that have not been categorised as insurance or trade payables for the purpose of reporting.

TWGE Group, LGI and LGL have no liabilities related to defined benefit pension schemes.

Changes to the recognition and valuation bases

There have been no material changes to the recognition and valuation bases in the reporting period.

D.4 Alternative methods for valuation

No alternative methods of valuation have been used.

D.5 Any other disclosures

There are no material differences between the valuation bases for the consolidated information provided for TWGE Group and those used for the solo entity information for LGI and LGL.

E Capital management

E.1 Own funds

Capital Management Policy

The TWGE Group internal capital target is to hold the Pillar 1 SCR, or the requirement identified during the ORSA process if higher, plus a Board approved buffer. Separate buffers are set for TWGE Group, LGI and LGL. The buffers to be held are set annually, having regard to the results of stress tests applied to projections over the three-year planning period. The Board will also consider whether to dividend any surplus capital above the target to TWGE Group's parent or to release capital out of the insurance firms for use elsewhere in the group.

TWGE Group's, LGI's and LGL's capital positions are formally assessed quarterly, and reported to the ARCC, to ensure that own funds continue to meet the targets set.

Own Funds

Available own funds for TWGE Group, LGI and LGL comprise:

As at 31 December 2020	TWGE Group	LGI	LGL
£'000			
Tier 1	137,235	42,213	4,404
Tier 2	-	-	-
Tier 3	2,322	368	-
Available Own Funds	139,557	42,581	4,404

As at 31 December 2019	TWGE Group	LGI	LGL
£'000			
Tier 1	106,200	89,288	5,161
Tier 2	-	-	-
Tier 3	3,859	1,479	-
Available Own Funds	110,058	90,766	5,161

Tier 1 own funds have three components: share capital, share premium and the reconciliation reserve. The reconciliation reserve comprises retained earnings and other distributable reserves as per the financial statements adjusted for SII valuation differences.

Tier 3 capital comprises deferred tax assets relating to timing differences and unutilised tax losses that are expected to be recovered against future taxable profits.

The available own funds for the TWGE Group were impacted by the capital management actions taken in preparation for Brexit and the Part VII transfer of the Groups' EU business into the new Dutch insurers.

Available own funds for TWGE Group increased £29,499,000 during the year. TWGE issued £25,559,000 of additional share capital, shown in Tier 1 above, to its parent to fund the Group's new insurers AEI and AEL. This amount was offset by a dividend of £7,000,000 which was paid in 2021. The own funds further increased in the year due to the performance of the Group as described in Section A and the performance of AEI and AEL (as disclosed within the AEI and AEL SFCRs).

LGI available own funds were £48,185,000 lower than prior year due to dividends of £37,573,000 made to fund the Group's new insurers, followed by an additional £7,000,000 paid after the year end. The balance of the movement is explained by an adverse performance in the year as described in Section A.

LGL available own funds were £757,000 lower than prior year primarily due to the recognition of a provision for corporate expenses relating to claims fulfilment, which was subsequently transferred to AEL on 2 November 2020.

The amount of Tier 2 and Tier 3 own funds that are eligible to be set against the SCR is restricted to 50% of that requirement.

Eligible own funds for TWGE, LGI and LGL comprise:

As at 31 December 2020	TWGE Group	LGI	LGL
£'000			
Tier 1	137,235	42,213	4,404
Tier 2	-	-	-
Tier 3	2,322	368	-
Eligible Own Funds to meet SCR	139,557	42,581	4,404

As at 31 December 2019	TWGE Group	LGI	LGL
£'000			
Tier 1	106,200	89,288	5,161
Tier 2	-	-	-
Tier 3	3,859	1,479	-
Eligible Own Funds to meet SCR	110,058	90,766	5,191

Eligible own funds for TWGE Group have reduced during the year due as described for available own funds above. The Eligible own funds for TWGE, LGI and LGL are the same as available own funds.

As at 31 December 2020	TWGE Group	LGI	LGL
£'000			
Tier 1	137,235	42,213	4,404
Tier 2	-	-	-
Tier 3	-	-	-
Eligible Own Funds to meet MCR	137,235	42,213	4,404

As at 31 December 2019	TWGE Group	LGI	LGL
£'000			
Tier 1	106,200	89,288	5,161
Tier 2	-	-	-
Tier 3	-	-	-
Eligible Own Funds to meet MCR	106,200	89,288	5,161

Eligible own funds for TWGE Group to meet the MCR are £137,235 in 2020 (2019: £106,200).

The main differences between equity as shown in the proforma or audited financial statements and the excess of assets over liabilities as calculated for solvency purposes are shown in the table below:

As at 31 December 2020	TWGE Group	LGI	LGL
£'000			
Equity per financial statements	136,386	52,710	4,404
Valuation of goodwill and intangibles	(12,282)	-	-
Property, plant, and Equipment Valuation differences	-	-	-
Difference between the valuation of technical provisions on a UK GAAP basis and under Solvency II	45,445	(3,421)	-
Other valuation differences	(18,861)	(63)	-
Deferred tax adjustment	(4,089)	356	-
Excess of assets over liabilities for solvency purposes	146,557	49,581	4,404

As at 31 December 2019	TWGE Group	LGI	LGL
£'000			
Equity per financial statements	111,386	90,170	5,161
Valuation of goodwill and intangibles	1,064	-	-
Property, plant, and Equipment Valuation differences	1,929	1,157	-
Difference between the valuation of technical provisions on a UK GAAP basis and under Solvency II	8,623	(1,392)	-
Other valuation differences	(13,339)	-	-
Deferred tax adjustment	395	831	-
Excess of assets over liabilities for solvency purposes	110,058	90,766	5,161

The available own funds for TWGE and LGI reflect the £7,000,000 dividend paid post the year end, this is not included in the excess of assets over liabilities for solvency purposes shown above.

Other valuation differences relate to differences between assets and liabilities valued on a Solvency II basis or on a financial statements basis as discussed in sections D.1 and D.3.

TWGE Group own funds are calculated on an accounting consolidation basis. There are no items included in TWGE Group own funds that are issued by an undertaking other than TWGE, the group insurance holding company.

No deductions are applied to own funds and there are no significant restrictions affecting their availability and transferability.

Neither the TWGE Group's nor the SII firms' own funds are subject to transitional arrangements and none have ancillary own funds.

E.2 Solvency Capital Requirement and Minimum Capital Requirement

The SCR and MCR for TWGE Group, LGI and LGL as at 31 December 2020 are:

As at 31 December 2020	TWGE Group	LGI	LGL
£'000			
Market Risk	22,558	7,172	564
Counterparty Default Risk	13,097	6,004	134
Non-Life Underwriting Risk	42,051	19,323	-
Life Underwriting Risk	170	-	46
Health Underwriting Risk	2,882	9	-
Sum of risk modules	80,858	32,508	744
Diversification between risk modules	(20,059)	(6,667)	(118)
Basic SCR	60,699	25,841	626
Operational Risk	3,434	2,622	43
Standard Formula SCR	64,134	28,463	669
MCR	22,585	7,116	3,338

As at 31 December 2019	TWGE Group	LGI	LGL
£'000			
Market Risk	16,713	12,133	1,226
Counterparty Default Risk	5,409	1,685	61
Non-Life Underwriting Risk	36,930	36,930	-
Life Underwriting Risk	194	-	194
Health Underwriting Risk	2,078	2,078	1
Sum of risk modules	61,324	52,826	1,482
Diversification between risk modules	(13,830)	(10,059)	(175)
Basic SCR	47,493	42,767	1,307
Operational Risk	3,472	3,468	10
Standard Formula SCR	50,965	46,235	1,317
MCR	18,577	15,390	3,187

The TWGE Group, LGI and LGL SCRs are all calculated using the Standard Formula and no undertaking specific parameters or simplifications are used.

The TWGE Group SCR is calculated on an accounting consolidation basis ("method 1") and relates to fully consolidated insurance undertakings, insurance holding companies and other ancillary service undertakings only. There are no components of the TWGE Group SCR arising from other entities.

The MCR has been calculated using the linear calculation as set out in the SII Directive and noted in the accompanying QRTs.

Details of the SCR and MCR calculations, including the MCR inputs and floor, are provided in QRTs S.25.01 and S.28.01 in Appendix F.

The available SCR for the group were impacted by the capital management actions taken in preparation for Brexit and the Part VII transfer of The Groups' EU business into the new Dutch insurers.

TWGE Group's SCR has increased £13,169,000 in the year. The Part VII transfer of Assurant's EU business held within fellow AEG companies AGIL and ALL into the TWGE Group has resulted in higher volumes of business underwritten by the group. Accordingly, technical provisions and insurance receivables on the TWGE balance sheet have increased in the year, and additional cash and investments are now held by the group. This has resulted in the SCR having higher underwriting, counterparty, and market risk. The MCR reflect the total of the 4 insurance companies in the Group, and has increased in the year in line with the above.

LGI has experienced a decrease in SCR of £17,772,000 primarily as a result of the Part VII transfer. Underwriting risk reduced by £19,676,000, due to the transfer out of all the companies EU business. Market risk reduced by £4,961,000 due to a reduction in the size of investment portfolio following the dividends of £37,573,000 described in section E.1. The MCR for LGI is the linear MCR and therefore moves in line with the SCR.

LGL's SCR has fallen due to the reduction in technical provisions as a result of the Part VII transfer. However, as the SCR is below the MCR, SCR movements do not affect LGL's capital requirement. The MCR is at the absolute floor required by the SII regulation, which is based in Euros, and only changes when the Eurosterling rates that firms are required to apply in the calculation change, which occurs annually.

E.3 Use of the duration-based equity risk sub-module in the calculation of the Solvency Capital Requirement

Neither TWGE Group, LGI nor LGL make use of the duration-based equity risk sub-module in the calculation of the SCR.

E.4 Differences between the standard formula and any internal models used

The Standard Formula is used in the calculation of the TWGE group SCR and the solo SCR for LGI and LGL.

E.5 Non-compliance with the minimum capital requirement and significant non-compliance with the solvency capital requirement

During the year there were no instances of non-compliance with either the SCR or MCR for TWGE Group, LGI or LGL.

E.6 Any other disclosures

COVID-19

As described in Section A.1, there are various risks that may arise due to the disruption caused by COVID19. Management is monitoring the impacts of these on the Group's and SII insurers' capital position and plans.

There is no other material information to disclose regarding the capital management of TWGE Group, LGI or LGL.

F. Appendices

Public Group QRTs - TWG Europe Limited, London General Insurance Company Limited, London General Life Company Limited

		Solvency II value
		C0010
Assets		
R0030	Intangible assets	0
R0040	Deferred tax assets	2,321,565
R0050	Pension benefit surplus	0
R0060	Property, plant & equipment held for own use	1,939,183
R0070	Investments (other than assets held for index-linked and unit-linked contracts)	204,113,436
R0080	Property (other than for own use)	0
R0090	Holdings in related undertakings, including participations	0
R0100	Equities	385,024
R0110	Equities - listed	0
R0120	Equities - unlisted	385,024
R0130	Bonds	193,939,403
R0140	Government Bonds	8,571,020
R0150	Corporate Bonds	185,368,383
R0160	Structured notes	0
R0170	Collateralised securities	0
R0180	Collective Investments Undertakings	6,370,985
R0190	Derivatives	0
R0200	Deposits other than cash equivalents	3,418,024
R0210	Other investments	0
R0220	Assets held for index-linked and unit-linked contracts	0
R0230	Loans and mortgages	0
R0240	Loans on policies	0
R0250	Loans and mortgages to individuals	0
R0260	Other loans and mortgages	0
R0270	Reinsurance recoverables from:	10,667,701
R0280	Non-life and health similar to non-life	10,502,778
R0290	Non-life excluding health	10,502,778
R0300	Health similar to non-life	0
R0310	Life and health similar to life, excluding health and index-linked and unit-linked	164,923
R0320	Health similar to life	143,035
R0330	Life excluding health and index-linked and unit-linked	21,888
R0340	Life index-linked and unit-linked	0
R0350	Deposits to cedants	0
R0360	Insurance and intermediaries receivables	46,708,762
R0370	Reinsurance receivables	1,674,126
R0380	Receivables (trade, not insurance)	15,873,508
R0390	Own shares (held directly)	0
R0400	Amounts due in respect of own fund items or initial fund called up but not yet paid in	0
R0410	Cash and cash equivalents	58,675,647
R0420	Any other assets, not elsewhere shown	0
R0500	Total assets	341,973,928

		Solvency II value
		C0010
R0510	Liabilities	
R0520	Technical provisions – non-life	57,325,042
R0530	Technical provisions – non-life (excluding health)	57,325,042
R0540	TP calculated as a whole	0
R0550	Best Estimate	52,391,349
R0560	Risk margin	4,933,693
R0570	Technical provisions - health (similar to non-life)	0
R0580	TP calculated as a whole	0
R0590	Best Estimate	0
R0600	Risk margin	0
R0610	Technical provisions - life (excluding index-linked and unit-linked)	33,787,188
R0620	Technical provisions - health (similar to life)	31,539,675
R0630	TP calculated as a whole	0
R0640	Best Estimate	28,598,652
R0650	Risk margin	2,941,023
R0660	Technical provisions – life (excluding health and index-linked and unit-linked)	2,247,513
R0670	TP calculated as a whole	0
R0680	Best Estimate	2,207,308
R0690	Risk margin	40,205
R0700	Technical provisions – index-linked and unit-linked	0
R0710	TP calculated as a whole	0
R0720	Best Estimate	0
R0730	Risk margin	0
R0740	Contingent liabilities	0
R0750	Provisions other than technical provisions	7,640,448
R0760	Pension benefit obligations	0
R0770	Deposits from reinsurers	0
R0780	Deferred tax liabilities	5,120,081
R0790	Derivatives	0
R0800	Debts owed to credit institutions	0
R0810	Financial liabilities other than debts owed to credit institutions	1,536,724
R0820	Insurance & intermediaries payables	61,008,597
R0830	Reinsurance payables	8,007,797
R0840	Payables (trade, not insurance)	20,990,618
R0850	Subordinated liabilities	0
R0860	Subordinated liabilities not in Basic Own Funds	0
R0870	Subordinated liabilities in Basic Own Funds	0
R0880	Any other liabilities, not elsewhere shown	0
R0900	Total liabilities	195,416,495
R1000	Excess of assets over liabilities	146,557,433

Premiums written	
R0110	Gross - Direct Business
R0120	Gross - Proportional reinsurance accepted
R0130	Gross - Non-proportional reinsurance accepted
R0140	Reinsurers' share
R0200	Net
Premiums earned	
R0210	Gross - Direct Business
R0220	Gross - Proportional reinsurance accepted
R0230	Gross - Non-proportional reinsurance accepted
R0240	Reinsurers' share
R0300	Net
Claims incurred	
R0310	Gross - Direct Business
R0320	Gross - Proportional reinsurance accepted
R0330	Gross - Non-proportional reinsurance accepted
R0340	Reinsurers' share
R0400	Net
Changes in other technical provisions	
R0410	Gross - Direct Business
R0420	Gross - Proportional reinsurance accepted
R0430	Gross - Non- proportional reinsurance accepted
R0440	Reinsurers'share
R0500	Net
R0550	Expenses incurred
R1200	Other expenses
R1300	Total expenses

	Line of Business for: non-life insurance and reinsurance obligations (direct business and accepted proportional reinsurance)			Total
	Income protection insurance	Fire and other damage to property insurance	Miscellaneous financial loss	
	C0020	C0070	C0120	C0200
R0110	0	36,927	46,343	83,270
R0120	0	0	-5	-5
R0130				0
R0140	0	15,945	10,510	26,455
R0200	0	20,982	35,827	56,809
R0210	70	37,022	65,364	102,457
R0220	0	0	0	0
R0230				0
R0240	1	17,010	16,532	33,542
R0300	70	20,012	48,833	68,915
R0310	-36	14,356	16,146	30,466
R0320	0	-161	323	162
R0330				0
R0340	-11	6,216	3,781	9,986
R0400	-25	7,979	12,688	20,642
R0410	0	0	0	0
R0420	0	0	0	0
R0430				0
R0440	0	0	0	0
R0500	0	0	0	0
R0550	51	15,476	36,884	52,411
R1200				679
R1300				53,090

Premiums written

R1410 Gross

R1420 Reinsurers' share

R1500 Net

Premiums earned

R1510 Gross

R1520 Reinsurers' share

R1600 Net

Claims incurred

R1610 Gross

R1620 Reinsurers' share

R1700 Net

Changes in other technical provisions

R1710 Gross

R1720 Reinsurers' share

R1800 Net

Expenses incurred

R2500 **Other expenses**

R2600 **Total expenses**

Line of Business for: life insurance		
Health insurance	Other life insurance	Total
C0210	C0240	C0300
7,103	338	7,441
774	14	789
6,329	324	6,653
7,921	799	8,720
955	23	978
6,966	775	7,742
5,681	470	6,152
840	-16	824
4,841	486	5,327
1,290	-110	1,180
-4	0	-4
1,294	-110	1,184
4,166	-9	4,157
		282
		4,439

Premium, claims and expenses by country

G.05.02.01

	Home Country	Top 5 countries (by amount of gross premiums written) - non-life obligations						Total Top 5 and home country
		C0010	C0020	C0030	C0040	C0050	C0060	
		IT	ES	DE	FR	NL		
		C0080	C0090	C0100	C0110	C0120	C0130	
R0010								C0070
								C0140
	Premiums written							
R0110	Gross - Direct Business	34,350	12,561	10,391	7,668	7,480	4,540	76,989
R0120	Gross - Proportional reinsurance accepted	0	0	-5	0	0	0	-5
R0130	Gross - Non-proportional reinsurance accepted	0	0	0	0	0	0	0
R0140	Reinsurers' share	15,114	908	1,689	661	788	2,687	21,846
R0200	Net	19,236	11,653	8,697	7,006	6,692	1,853	55,138
	Premiums earned							
R0210	Gross - Direct Business	46,786	9,371	10,453	6,093	10,921	4,934	88,558
R0220	Gross - Proportional reinsurance accepted	0	0	-5	0	0	0	-5
R0230	Gross - Non-proportional reinsurance accepted	0	0	0	0	0	0	0
R0240	Reinsurers' share	18,020	1,633	2,408	547	2,299	2,740	27,646
R0300	Net	28,767	7,739	8,040	5,546	8,622	2,194	60,907
	Claims incurred							
R0310	Gross - Direct Business	14,982	893	2,920	2,616	2,918	2,396	26,726
R0320	Gross - Proportional reinsurance accepted	0	10	316	0	-4	0	322
R0330	Gross - Non-proportional reinsurance accepted	0	0	0	0	0	0	0
R0340	Reinsurers' share	4,783	9	571	183	497	1,390	7,433
R0400	Net	10,199	895	2,665	2,433	2,416	1,006	19,614
	Changes in other technical provisions							
R0410	Gross - Direct Business	0	0	0	0	0	0	0
R0420	Gross - Proportional reinsurance accepted	0	0	0	0	0	0	0
R0430	Gross - Non-proportional reinsurance accepted	0	0	0	0	0	0	0
R0440	Reinsurers' share	0	0	0	0	0	0	0
R0500	Net	0	0	0	0	0	0	0
R0550	Expenses incurred	22,995	5,929	5,430	4,033	5,157	1,209	44,752
R1200	Other expenses							897
R1300	Total expenses							45,649
	Home Country	Top 5 countries (by amount of gross premiums written) - life obligations						Total Top 5 and home country
		C0150	C0160	C0170	C0180	C0190	C0200	
		NL	IE	BE	ES	DE		
		C0220	C0230	C0240	C0250	C0260	C0270	
R1400								C0210
								C0280
	Premiums written							
R1410	Gross	14	7,032	163	240	-5	0	7,444
R1420	Reinsurers' share	14	733	10	30	1	0	789
R1500	Net	-1	6,298	153	211	-5	0	6,656
	Premiums earned							
R1510	Gross	13	7,972	24	516	118	3	8,647
R1520	Reinsurers' share	14	854	12	68	17	1	967
R1600	Net	-1	7,118	12	448	101	2	7,680
	Claims incurred							
R1610	Gross	94	5,299	547	129	43	2	6,113
R1620	Reinsurers' share	13	795	9	21	7	0	845
R1700	Net	81	4,504	538	108	36	1	5,269
	Changes in other technical provisions							
R1710	Gross	279	1,455	-426	-129	0	0	1,180
R1720	Reinsurers' share	-4	0	0	0	0	0	-4
R1800	Net	283	1,455	-426	-129	0	0	1,184
R1900	Expenses incurred	0	3,509	293	206	56	1	4,065
R2500	Other expenses							169
R2600	Total expenses							4,233

	Total	Tier 1 - unrestricted	Tier 1 - restricted	Tier 2	Tier 3
	C0010	C0020	C0030	C0040	C0050
Basic own funds before deduction for participations in other financial sector					
R0010 Ordinary share capital (gross of own shares)	49,550	49,550		0	
R0020 Non-available called but not paid in ordinary share capital at group level	0	0		0	
R0030 Share premium account related to ordinary share capital	0	0		0	
R0040 Initial funds, members' contributions or the equivalent basic own - fund item for mutual and mutual-type undertakings	0	0		0	
R0050 Subordinated mutual member accounts	0		0	0	0
R0060 Non-available subordinated mutual member accounts at group level	0		0	0	0
R0070 Surplus funds	0	0			
R0080 Non-available surplus funds at group level	0	0			
R0090 Preference shares	0		0	0	0
R0100 Non-available preference shares at group level	0		0	0	0
R0110 Share premium account related to preference shares	0		0	0	0
R0120 Non-available share premium account related to preference shares at group level	0		0	0	0
R0130 Reconciliation reserve	87,686	87,686			
R0140 Subordinated liabilities	0		0	0	0
R0150 Non-available subordinated liabilities at group level	0		0	0	0
R0160 An amount equal to the value of net deferred tax assets	2,322				2,322
R0170 The amount equal to the value of net deferred tax assets not available at the group level	0				0
R0180 Other items approved by supervisory authority as basic own funds not specified above	0	0	0	0	0
R0190 Non available own funds related to other own funds items approved by supervisory authority	0	0	0	0	0
R0200 Minority interests (if not reported as part of a specific own fund item)	0	0	0	0	0
R0210 Non-available minority interests at group level	0	0	0	0	0
Own funds from the financial statements that should not be represented by the reconciliation reserve and do not meet the criteria to be classified as Solvency II own funds					
R0220 Own funds from the financial statements that should not be represented by the reconciliation reserve and do not meet the criteria to be classified as Solvency II own funds	0				
Deductions					
R0230 Deductions for participations in other financial undertakings, including non-regulated undertakings carrying out financial activities	0	0	0	0	0
R0240 whereof deducted according to art 228 of the Directive 2009/138/EC	0	0	0	0	
R0250 Deductions for participations where there is non-availability of information (Article 229)	0	0	0	0	0
R0260 Deduction for participations included by using D&A when a combination of methods is used	0	0	0	0	0
R0270 Total of non-available own fund items	0	0	0	0	0
R0280 Total deductions	0	0	0	0	0
R0290 Total basic own funds after deductions	139,557	137,236	0	0	2,322
Ancillary own funds					
R0300 Unpaid and uncalled ordinary share capital callable on demand	0			0	
R0310 Unpaid and uncalled initial funds, members' contributions or the equivalent basic own fund item for mutual and mutual - type undertakings, callable on demand	0			0	
R0320 Unpaid and uncalled preference shares callable on demand	0			0	0
R0330 A legally binding commitment to subscribe and pay for subordinated liabilities on demand	0			0	0
R0340 Letters of credit and guarantees under Article 96(2) of the Directive 2009/138/EC	0			0	
R0350 Letters of credit and guarantees other than Article 96(2) of the Directive 2009/138/EC	0			0	0
R0360 Supplementary members calls under first subparagraph of Article 96(3) of the Directive 2009/138/EC	0			0	
R0370 Supplementary members calls - other than under first subparagraph of Article 96(3) of the Directive 2009/138/EC	0			0	0
R0380 Non available ancillary own funds at group level	0			0	0
R0390 Other ancillary own funds	0			0	0
R0400 Total ancillary own funds	0			0	0
Own funds of other financial sectors					
R0410 Credit institutions, investment firms, financial institutions, alternative investment fund managers, UCITS management companies - total	0	0	0	0	
R0420 Institutions for occupational retirement provision	0	0	0	0	0
R0430 Non regulated entities carrying out financial activities	0	0	0	0	
R0440 Total own funds of other financial sectors	0	0	0	0	0
Own funds when using the D&A, exclusively or in combination of method 1					
R0450 Own funds allocated when using the D&A and combination of method	0	0	0	0	0
R0460 Own funds allocated when using the D&A and a combination of method net of IGT	0	0	0	0	0
R0520 Total available own funds to meet the consolidated group SCR (excluding own funds from other financial sector and from the undertakings included via D&A)	139,557	137,236	0	0	2,322
R0530 Total available own funds to meet the minimum consolidated group SCR	137,236	137,236	0	0	
R0560 Total eligible own funds to meet the consolidated group SCR (excluding own funds from other financial sector and from the undertakings included via D&A)	139,557	137,236	0	0	2,322
R0570 Total eligible own funds to meet the minimum consolidated group SCR	137,236	137,236	0	0	
Consolidated Group SCR					
R0610 Minimum consolidated Group SCR	22,585				
R0630 Ratio of Eligible own funds to the consolidated Group SCR (excluding other financial sectors and the undertakings included via D&A)					
R0650 Ratio of Eligible own funds to Minimum Consolidated Group SCR	6.0763				
R0660 Total eligible own funds to meet the group SCR (including own funds from other financial sector and from the undertakings included via D&A)	139,557	137,236	0	0	2,322
R0670 SCR for entities included with D&A method					
R0680 Group SCR	64,134				
R0690 Ratio of Eligible own funds to group SCR including other financial sectors and the undertakings included via D&A	2.1760				
Reconciliation reserve					
R0700 Excess of assets over liabilities	146,557				
R0710 Own shares (held directly and indirectly)	0				
R0720 Forseeable dividends, distributions and charges	7,000				
R0730 Other basic own fund items	51,872				
R0740 Adjustment for restricted own fund items in respect of matching adjustment portfolios and ring fenced funds	0				
R0750 Other non available own funds	0				
R0760 Reconciliation reserve before deduction for participations	87,686				
Expected profits					
R0770 Expected profits included in future premiums (EIPFP) - Life business	0				
R0780 Expected profits included in future premiums (EIPFP) - Non- life business	7,179				
R0790 Total Expected profits included in future premiums (EIPFP)	7,179				

	Gross solvency capital requirement	USP	Simplifications
	C0110	C0090	C0120
R0010 Market risk	22,558		
R0020 Counterparty default risk	13,097		
R0030 Life underwriting risk	170		
R0040 Health underwriting risk	2,882		
R0050 Non-life underwriting risk	42,051		
R0060 Diversification	-20,059		
R0070 Intangible asset risk	0		
R0100 Basic Solvency Capital Requirement	60,699		
Calculation of Solvency Capital Requirement			
	C0100		
R0130 Operational risk	3,434		
R0140 Loss-absorbing capacity of technical provisions			
R0150 Loss-absorbing capacity of deferred taxes			
R0160 Capital requirement for business operated in accordance with Art. 4 of Directive 2003/41/EC			
R0200 Solvency capital requirement excluding capital add-on	64,134		
R0210 Capital add-on already set			
R0220 Solvency capital requirement	64,134		
Other information on SCR			
R0400 Capital requirement for duration-based equity risk sub-module			
R0410 Total amount of Notional Solvency Capital Requirements for remaining part			
R0420 Total amount of Notional Solvency Capital Requirements for ring fenced funds			
R0430 Total amount of Notional Solvency Capital Requirements for matching adjustment portfolios			
R0440 Diversification effects due to RFF nSCR aggregation for article 304			
R0470 Minimum consolidated group solvency capital requirement	22,585		
Information on other entities			
R0500 Capital requirement for other financial sectors (Non-insurance capital requirements)	0		
R0510 Capital requirement for other financial sectors (Non-insurance capital requirements) - Credit institutions, investment firms and financial institutions, alternative investment funds managers, UCITS management companies			
R0520 Capital requirement for other financial sectors (Non-insurance capital requirements) - Institutions for occupational retirement provisions			
R0530 Capital requirement for other financial sectors (Non-insurance capital requirements) - Capital requirement for non-regulated entities carrying out financial activities			
R0540 Capital requirement for non-controlled participation requirements			
R0550 Capital requirement for residual undertakings			
Overall SCR			
R0560 SCR for undertakings included via D and A			
R0570 Solvency capital requirement	64,134		

Undertakings in the scope of the group G.32.01.22

Country	Identification code of the undertaking	Type of code of the 10 of the undertaking	Legal name of the undertaking	Type of undertaking	Legal form	Category (mutual/non mutual)	Supervisory Authority	Criteria of				Level of influence	Proportional share used for group solvency calculation	Inclusion in the		Group solvency calculation	
								% capital share	% used for the establishment of consolidated accounts	% voting rights	Other criteria			YES/NO	Date of decision if art. 214 is applied	Method used and under method 1, treatment of the undertaking	
C0010	C0020	C0030	C0040	C0050	C0060	C0070	C0080	C0180	C0190	C0200	C0210	C0220	C0230	C0240	C0250	C0260	
GB	2138000Q74W07BK3SN79	LEI	London General Insurance Company Limited	2	limited by shares	2	Prudential Regulation Authority	1.0000	1.0000	1.0000			1.0000				
GB	2138000H9Q2V4773SU118	LEI	London General Life Company Limited	2	limited by shares	2	Prudential Regulation Authority	1.0000	1.0000	1.0000			1.0000				
GB	2138000HNTK399U19728	LEI	TWG Services Limited	10	limited by shares	2	Financial Conduct Authority	1.0000	1.0000	1.0000			1.0000				
GB	2138000DN9X5ME6AVH90	LEI	TWG Europe Limited	10	limited by shares	2	Financial Conduct Authority	0.0000	0.0000	0.0000			1.0000				
NL	21380006H4XXOB3BPC592	LEI	ASSURANT EUROPE INSURANCE N.V.	99	limited by shares	2	De Nederlandsche Bank	1.0000	1.0000	1.0000	1	1	1.0000	1	1	1	
NL	2138000KZ0UBZ7JDBS60	LEI	ASSURANT EUROPE LIFE INSURANCE N.V.	99	limited by shares	2	De Nederlandsche Bank	1.0000	1.0000	1.0000	1	1	1.0000	1	1	1	
NL	2138000TRHSSCZKOJY64	LEI	ASSURANT EUROPE SERVICES B.V.	99	limited by shares	2	Autoriteit Financiële Markten	1.0000	1.0000	1.0000	1	1	1.0000	1	1	1	

		Solvency II value
		C0010
R0030	Intangible assets	0
R0040	Deferred tax assets	369
R0050	Pension benefit surplus	0
R0060	Property, plant & equipment held for own use	0
R0070	Investments (other than assets held for index-linked and unit-linked contracts)	67,212
R0080	Property (other than for own use)	0
R0090	Holdings in related undertakings, including participations	0
R0100	Equities	2,655
R0110	Equities - listed	0
R0120	Equities - unlisted	2,655
R0130	Bonds	60,346
R0140	Government Bonds	7,224
R0150	Corporate Bonds	53,122
R0160	Structured notes	0
R0170	Collateralised securities	0
R0180	Collective Investments Undertakings	1,617
R0190	Derivatives	0
R0200	Deposits other than cash equivalents	2,594
R0210	Other investments	0
R0220	Assets held for index-linked and unit-linked contracts	0
R0230	Loans and mortgages	0
R0240	Loans on policies	0
R0250	Loans and mortgages to individuals	0
R0260	Other loans and mortgages	0
R0270	Reinsurance recoverables from:	5,187
R0280	Non-life and health similar to non-life	5,187
R0290	Non-life excluding health	5,187
R0300	Health similar to non-life	0
R0310	Life and health similar to life, excluding health and index-linked and unit-linked	0
R0320	Health similar to life	0
R0330	Life excluding health and index-linked and unit-linked	0
R0340	Life index-linked and unit-linked	0
R0350	Deposits to cedants	0
R0360	Insurance and intermediaries receivables	15,442
R0370	Reinsurance receivables	1,322
R0380	Receivables (trade, not insurance)	17,831
R0390	Own shares (held directly)	0
R0400	Amounts due in respect of own fund items or initial fund called up but not yet paid in	0
R0410	Cash and cash equivalents	6,435
R0420	Any other assets, not elsewhere shown	0
R0500	Total assets	113,798

		Solvency II value
		C0010
R0510	Liabilities	
R0520	Technical provisions – non-life	26,321
R0530	Technical provisions – non-life (excluding health)	26,321
R0540	TP calculated as a whole	0
R0550	Best Estimate	23,911
R0560	Risk margin	2,409
R0570	Technical provisions - health (similar to non-life)	0
R0580	TP calculated as a whole	0
R0590	Best Estimate	0
R0600	Risk margin	0
R0610	Technical provisions - life (excluding index-linked and unit-linked)	0
R0620	TP calculated as a whole	0
R0630	Best Estimate	0
R0640	Risk margin	0
R0650	Technical provisions – life (excluding health and index-linked and unit-linked)	0
R0660	TP calculated as a whole	0
R0670	Best Estimate	0
R0680	Risk margin	0
R0690	Technical provisions – index-linked and unit-linked	0
R0700	TP calculated as a whole	0
R0710	Best Estimate	0
R0720	Risk margin	0
R0740	Contingent liabilities	0
R0750	Provisions other than technical provisions	0
R0760	Pension benefit obligations	0
R0770	Deposits from reinsurers	0
R0780	Deferred tax liabilities	0
R0790	Derivatives	0
R0800	Debts owed to credit institutions	0
R0810	Financial liabilities other than debts owed to credit institutions	0
R0820	Insurance & intermediaries payables	27,582
R0830	Reinsurance payables	1,313
R0840	Payables (trade, not insurance)	9,000
R0850	Subordinated liabilities	0
R0860	Subordinated liabilities not in Basic Own Funds	0
R0870	Subordinated liabilities in Basic Own Funds	0
R0880	Any other liabilities, not elsewhere shown	0
R0900	Total liabilities	64,216
R1000	Excess of assets over liabilities	49,581

Premiums, claims and expenses by line of business - table 1

P.05.01.02.01

Premiums written	
R0110	Gross - Direct Business
R0120	Gross - Proportional reinsurance accepted
R0130	Gross - Non-proportional reinsurance accepted
R0140	Reinsurers' share
R0200	Net
Premiums earned	
R0210	Gross - Direct Business
R0220	Gross - Proportional reinsurance accepted
R0230	Gross - Non-proportional reinsurance accepted
R0240	Reinsurers' share
R0300	Net
Claims incurred	
R0310	Gross - Direct Business
R0320	Gross - Proportional reinsurance accepted
R0330	Gross - Non-proportional reinsurance accepted
R0340	Reinsurers' share
R0400	Net
Changes in other technical provisions	
R0410	Gross - Direct Business
R0420	Gross - Proportional reinsurance accepted
R0430	Gross - Non- proportional reinsurance accepted
R0440	Reinsurers' share
R0500	Net
R0550	Expenses incurred
R1200	Other expenses
R1300	Total expenses

Line of Business for: non-life insurance and reinsurance obligations (direct business and accepted proportional reinsurance)		Total
Fire and other damage to property insurance	Miscellaneous financial loss	
C0070	C0120	C0200
13,299	35,625	48,924
0	-5	-5
		0
8,719	9,855	18,573
4,580	25,765	30,346
18,515	59,956	78,471
0	0	0
		0
9,774	15,718	25,492
8,741	44,238	52,979
6,677	14,809	21,486
-161	323	162
		0
2,390	3,714	6,105
4,126	11,418	15,543
0	0	0
0	0	0
		0
0	0	0
0	0	0
7,180	33,502	40,682
		0
		40,682

Premiums, claims and expenses by line of business - table 2

P.05.01.02.02

Line of Business for:	
life insurance obligations	
Total	
Health insurance	
C0210	C0300
5,674	5,674
774	774
4,900	4,900
6,689	6,689
954	954
5,735	5,735
5,351	5,351
844	844
4,507	4,507
0	0
0	0
0	0
2,754	2,754
	0
	2,754

Premiums written

R1410 Gross
R1420 Reinsurers' share
R1500 Net

Premiums earned

R1510 Gross
R1520 Reinsurers' share
R1600 Net

Claims incurred

R1610 Gross
R1620 Reinsurers' share
R1700 Net

Changes in other technical provisions

R1710 Gross
R1720 Reinsurers' share
R1800 Net

Expenses incurred

R1900 Other expenses

R2500 Total expenses

R2600

Premium, claims and expenses by country

P.05.02.01

		Home Country	Top 5 countries (by amount of gross premiums written) - non-life obligations					Total Top 5 and home country
		C0010	C0020	C0030	C0040	C0050	C0060	C0070
R0010			IT	ES	DE	FR	NL	
		C0080	C0090	C0100	C0110	C0120	C0130	C0140
	Premiums written							
R0110	Gross - Direct Business	34,350	3,719	2,325	2,273	2,954	1,752	47,372
R0120	Gross - Proportional reinsurance accepted	0	0	-5	0	0	0	-5
R0130	Gross - Non-proportional reinsurance accepted	0	0	0	0	0	0	0
R0140	Reinsurers' share	15,114	761	682	392	841	246	18,036
R0200	Net	19,236	2,958	1,638	1,881	2,113	1,505	29,331
	Premiums earned							
R0210	Gross - Direct Business	46,786	9,308	3,902	3,878	4,008	2,107	69,990
R0220	Gross - Proportional reinsurance accepted	0	0	-5	0	0	0	-5
R0230	Gross - Non-proportional reinsurance accepted	0	0	0	0	0	0	0
R0240	Reinsurers' share	18,020	2,195	1,259	543	1,421	299	23,737
R0300	Net	28,766	7,113	2,638	3,336	2,586	1,808	46,247
	Claims incurred							
R0310	Gross - Direct Business	14,982	2,504	612	1,465	-102	806	20,267
R0320	Gross - Proportional reinsurance accepted	0	-4	316	0	10	0	322
R0330	Gross - Non-proportional reinsurance accepted	0	0	0	0	0	0	0
R0340	Reinsurers' share	4,783	483	222	195	3	78	5,764
R0400	Net	10,199	2,016	706	1,270	-95	728	14,824
	Changes in other technical provisions							
R0410	Gross - Direct Business	0	0	0	0	0	0	0
R0420	Gross - Proportional reinsurance accepted	0	0	0	0	0	0	0
R0430	Gross - Non- proportional reinsurance accepted	0	0	0	0	0	0	0
R0440	Reinsurers'share	0	0	0	0	0	0	0
R0500	Net	0	0	0	0	0	0	0
R0550	Expenses incurred	22,995	4,132	1,759	2,530	2,428	946	34,790
R1200	Other expenses							318
R1300	Total expenses							35,109

		Home Country	Top 5 countries (by amount of gross premiums written) - life obligations					Total Top 5 and home country
		C0150	C0160	C0170	C0180	C0190	C0200	C0210
R1400			NL	IE	BE	ES	DE	
		C0220	C0230	C0240	C0250	C0260	C0270	C0280
	Premiums written							
R1410	Gross	0	5,463	29	187	-4	0	5,674
R1420	Reinsurers' share	0	733	10	30	1	0	774
R1500	Net	0	4,730	18	157	-5	0	4,900
	Premiums earned							
R1510	Gross	-1	6,088	38	422	119	3	6,669
R1520	Reinsurers' share	0	853	12	68	17	1	951
R1600	Net	-1	5,235	26	354	101	2	5,718
	Claims incurred							
R1610	Gross	15	5,104	11	173	43	2	5,347
R1620	Reinsurers' share	13	794	9	21	7	0	844
R1700	Net	2	4,310	2	152	36	2	4,503
	Changes in other technical provisions							
R1710	Gross	0	0	0	0	0	0	0
R1720	Reinsurers' share	0	0	0	0	0	0	0
R1800	Net	0	0	0	0	0	0	0
R1900	Expenses incurred	0	2,472	13	199	57	1	2,742
R2500	Other expenses							0
R2600	Total expenses							2,742

Non-Life Technical Provisions

P.17.01.02

Direct business and accepted		Total Non-Life obligation
Fire and other damage to property insurance	Miscellaneous financial loss	
C0080	C0130	C0180
0	0	0
0	0	0
6,413	15,369	21,781
1,446	3,033	4,479
4,966	12,336	17,302
599	1,531	2,130
220	489	708
379	1,043	1,422
7,011	16,900	23,911
5,345	13,379	18,724
688	1,722	2,409
0	0	0
0	0	0
0	0	0
7,699	18,621	26,321
1,666	3,521	5,187
6,033	15,100	21,134

R0010	Technical provisions calculated as a whole
R0050	Total Recoverables from reinsurance/SPV and Finite Re after the adjustment for expected losses due to counterparty default associated to TP as a whole
	Technical provisions calculated as a sum of BE and RM
	Best estimate
	Premium provisions
R0060	Gross
R0140	Total recoverable from reinsurance/SPV and Finite Re after the adjustment for expected losses due to counterparty default
R0150	Net Best Estimate of Premium Provisions
	Claims provisions
R0160	Gross
R0240	Total recoverable from reinsurance/SPV and Finite Re after the adjustment for expected losses due to counterparty default
R0250	Net Best Estimate of Claims Provisions
R0260	Total Best estimate - gross
R0270	Total Best estimate - net
R0280	Risk margin
	Amount of the transitional on Technical Provisions
R0290	Technical Provisions calculated as a whole
R0300	Best estimate
R0310	Risk margin
	Technical provisions - total
R0320	Technical provisions - total
R0330	Recoverable from reinsurance contract/SPV and Finite Re after the adjustment for expected losses due to counterparty default - total
R0340	Technical provisions minus recoverables from reinsurance/SPV and Finite Re - total

Non-Life Insurance Claims Information (simplified template for the public disclosure) P.19.01.21

Total Non-Life Business

Z0020

Accident year /
Underwriting year

Z0020

Accident year [AY]

Gross Claims Paid (non-cumulative)

(absolute amount)

Development year

[illegible]

Gross undiscounted Best Estimate Claims Provisions

(absolute amount)

Development year

[illegible]

Own Funds

P.23.01.01

Basic own funds before deduction for participations in other financial sector as foreseen in article 68 of Delegated Regulation 2015/35	
R0010	Ordinary share capital (gross of own shares)
R0030	Share premium account related to ordinary share capital
R0040	Initial funds, members' contributions or the equivalent basic own - fund item for mutual and mutual-type undertakings
R0050	Subordinated mutual member accounts
R0070	Surplus funds
R0090	Preference shares
R0110	Share premium account related to preference shares
R0130	Reconciliation reserve
R0140	Subordinated liabilities
R0160	An amount equal to the value of net deferred tax assets
R0180	Other own fund items approved by the supervisory authority as basic own funds not specified above
Own funds from the financial statements that should not be represented by the reconciliation reserve and do not meet the criteria to be classified as Solvency II own funds	
R0220	Own funds from the financial statements that should not be represented by the reconciliation reserve and do not meet the criteria to be classified as Solvency II own funds
Deductions	
R0230	Deductions for participations in financial and credit institutions
R0290	Total basic own funds after deductions
Ancillary own funds	
R0300	Unpaid and uncalled ordinary share capital callable on demand
R0310	Unpaid and uncalled initial funds, members' contributions or the equivalent basic own fund item for mutual and mutual - type undertakings, callable on demand
R0320	Unpaid and uncalled preference shares callable on demand
R0330	A legally binding commitment to subscribe and pay for subordinated liabilities on demand
R0340	Letters of credit and guarantees under Article 96(2) of the Directive 2009/138/EC
R0350	Letters of credit and guarantees other than under Article 96(2) of the Directive 2009/138/EC
R0360	Supplementary members calls under first subparagraph of Article 96(3) of the Directive 2009/138/EC
R0370	Supplementary members calls - other than under first subparagraph of Article 96(3) of the Directive 2009/138/EC
R0390	Other ancillary own funds
R0400	Total ancillary own funds
Available and eligible own funds	
R0500	Total available own funds to meet the SCR
R0510	Total available own funds to meet the MCR
R0540	Total eligible own funds to meet the SCR
R0550	Total eligible own funds to meet the MCR
R0580	SCR
R0600	MCR
R0620	Ratio of Eligible own funds to SCR
R0640	Ratio of Eligible own funds to MCR
Reconciliation reserve	
R0700	Excess of assets over liabilities
R0710	Own shares (held directly and indirectly)
R0720	Foreseeable dividends, distributions and charges
R0730	Other basic own fund items
R0740	Adjustment for restricted own fund items in respect of matching adjustment portfolios and ring fenced funds
R0760	Reconciliation reserve
Expected profits	
R0770	Expected profits included in future premiums (EPIFP) - Life business
R0780	Expected profits included in future premiums (EPIFP) - Non- life business
R0790	Total Expected profits included in future premiums (EPIFP)

Total	Tier 1 - unrestricted	Tier 1 - restricted	Tier 2	Tier 3
C0010	C0020	C0030	C0040	C0050
34,000	34,000		0	
0	0		0	
0	0		0	
0		0	0	0
0	0			
0		0	0	0
0		0	0	0
8,213	8,213			
0		0	0	0
369				369
0	0	0	0	0
0				
0				
0	0	0	0	0
42,581	42,213	0	0	369
0			0	
0			0	
0			0	0
0			0	0
0			0	0
0			0	0
0			0	0
0			0	0
42,581	42,213	0	0	369
42,213	42,213	0	0	
42,581	42,213	0	0	369
42,213	42,213	0	0	
28,463				
7,116				
1,4960				
5,9323				
C0060				
49,581				
0				
7,000				
34,369				
0				
8,213				
0				
0				
0				
0				

Solvency Capital Requirement - for undertakings on Standard Formula

P.25.01.21

			Gross solvency capital requirement	USP	Simplifications
			C0110	C0090	C0120
R0010	Market risk	R0010	7,172		
R0020	Counterparty default risk	R0020	6,004		
R0030	Life underwriting risk	R0030	0		
R0040	Health underwriting risk	R0040	9		
R0050	Non-life underwriting risk	R0050	19,323		
R0060	Diversification	R0060	-6,667		
R0070	Intangible asset risk	R0070	0		
R0100	Basic Solvency Capital Requirement	R0100	25,841		
			C0100		
R0130	Operational risk	R0130	2,622		
R0140	Loss-absorbing capacity of technical provisions	R0140	0		
R0150	Loss-absorbing capacity of deferred taxes	R0150	0		
R0160	Capital requirement for business operated in accordance with Art. 4 of Directive 2003/41/EC	R0160	0		
R0200	Solvency capital requirement excluding capital add-on	R0200	28,463		
R0210	Capital add-on already set	R0210	0		
R0220	Solvency capital requirement	R0220	28,463		
	Other information on SCR				
R0400	Capital requirement for duration-based equity risk sub-module	R0400	0		
R0410	Total amount of Notional Solvency Capital Requirement for remaining part	R0410	0		
R0420	Total amount of Notional Solvency Capital Requirements for ring fenced funds	R0420	0		
R0430	Total amount of Notional Solvency Capital Requirement for matching adjustment portfolios	R0430	0		
R0440	Diversification effects due to RFF nSCR aggregation for article 304	R0440	0		
	Approach to tax rate			Yes/No	
				C0100	
R0590	Approach based on average tax rate	R0590		3 - Not applicable as LAC DT is not used (in this case R0600 to R0690 are not applicable)	
	Calculation of loss absorbing capacity of deferred taxes			LAC DT	
				C0130	
R0600	DTA	R0600			
R0610	DTA carry forward	R0610			
R0620	DTA due to deductible temporary differences	R0620			
R0630	DTL	R0630			
R0640	LAC DT	R0640	0		
R0650	LAC DT justified by reversion of deferred tax liabilities	R0650	0		
R0660	LAC DT justified by reference to probable future taxable economic profit	R0660	0		
R0670	LAC DT justified by carry back, current year	R0670	0		
R0680	LAC DT justified by carry back, future years	R0680	0		
R0690	Maximum LAC DT	R0690	0		

Minimum Capital Requirement - Only life or only non-life insurance or reinsurance activi P.28.01.01

Linear formula component for non-life insurance and reinsurance obligations

		C0010		
R0010	MCRNL Result	6,478	Net (of reinsurance/SPV) best estimate and TP calculated as a whole	Net (of reinsurance) written premiums in the last 12 months
			C0020	C0030
R0020	Medical expenses insurance and proportional reinsurance		0	0
R0030	Income protection insurance and proportional reinsurance		0	0
R0040	Workers' compensation insurance and proportional reinsurance		0	0
R0050	Motor vehicle liability insurance and proportional reinsurance		0	0
R0060	Other motor insurance and proportional reinsurance		0	0
R0070	Marine, aviation and transport insurance and proportional reinsurance		0	0
R0080	Fire and other damage to property insurance and proportional reinsurance		5,345	4,580
R0090	General liability insurance and proportional reinsurance		0	0
R0100	Credit and suretyship insurance and proportional reinsurance		0	0
R0110	Legal expenses insurance and proportional reinsurance		0	0
R0120	Assistance and proportional reinsurance		0	0
R0130	Miscellaneous financial loss insurance and proportional reinsurance		13,379	25,765
R0140	Non-proportional health reinsurance		0	0
R0150	Non-proportional casualty reinsurance		0	0
R0160	Non-proportional marine, aviation and transport reinsurance		0	0
R0170	Non-proportional property reinsurance		0	0

Linear formula component for life insurance and reinsurance obligations

		C0040		
R0200	MCRL Result	0	Net (of reinsurance/SPV) best estimate and TP calculated as a whole	Net (of reinsurance/SPV) total capital at risk
			C0050	C0060
R0210	Obligations with profit participation - guaranteed benefits		0	
R0220	Obligations with profit participation - future discretionary benefits		0	
R0230	Index-linked and unit-linked insurance obligations		0	
R0240	Other life (re)insurance and health (re)insurance obligations		0	
R0250	Total capital at risk for all life (re)insurance obligations			333

Overall MCR calculation

		C0070
R0300	Linear MCR	6,478
R0310	SCR	28,463
R0320	MCR cap	12,808
R0330	MCR floor	7,116
R0340	Combined MCR	7,116
R0350	Absolute floor of the MCR	3,187

		C0070
R0400	Minimum Capital Requirement	7,116

		Solvency II value
		C0010
Assets		
R0030	Intangible assets	0
R0040	Deferred tax assets	0
R0050	Pension benefit surplus	0
R0060	Property, plant & equipment held for own use	0
R0070	Investments (other than assets held for index-linked and unit-linked contracts)	6,402
R0080	Property (other than for own use)	0
R0090	Holdings in related undertakings, including participations	0
R0100	Equities	0
R0110	Equities - listed	0
R0120	Equities - unlisted	0
R0130	Bonds	1,648
R0140	Government Bonds	1,347
R0150	Corporate Bonds	300
R0160	Structured notes	0
R0170	Collateralised securities	0
R0180	Collective Investments Undertakings	4,754
R0190	Derivatives	0
R0200	Deposits other than cash equivalents	0
R0210	Other investments	0
R0220	Assets held for index-linked and unit-linked contracts	0
R0230	Loans and mortgages	0
R0240	Loans on policies	0
R0250	Loans and mortgages to individuals	0
R0260	Other loans and mortgages	0
R0270	Reinsurance recoverables from:	5
R0280	Non-life and health similar to non-life	0
R0290	Non-life excluding health	0
R0300	Health similar to non-life	0
R0310	Life and health similar to life, excluding health and index-linked and unit-linked	5
R0320	Health similar to life	9
R0330	Life excluding health and index-linked and unit-linked	-4
R0340	Life index-linked and unit-linked	0
R0350	Deposits to cedants	0
R0360	Insurance and intermediaries receivables	577
R0370	Reinsurance receivables	0
R0380	Receivables (trade, not insurance)	283
R0390	Own shares (held directly)	0
R0400	Amounts due in respect of own fund items or initial fund called up but not yet paid in	0
R0410	Cash and cash equivalents	390
R0420	Any other assets, not elsewhere shown	0
R0500	Total assets	7,657

		Solvency II value
		C0010
R0510	Liabilities	0
R0520	Technical provisions – non-life	0
R0530	Technical provisions – non-life (excluding health)	0
R0540	TP calculated as a whole	0
R0550	Best Estimate	0
R0560	Risk margin	0
R0570	Technical provisions - health (similar to non-life)	0
R0580	TP calculated as a whole	0
R0590	Best Estimate	0
R0600	Risk margin	0
R0610	Technical provisions - life (excluding index-linked and unit-linked)	394
R0620	Technical provisions - health (similar to life)	19
R0630	TP calculated as a whole	0
R0640	Best Estimate	18
R0650	Risk margin	1
R0660	Technical provisions – life (excluding health and index-linked and unit-linked)	375
R0670	TP calculated as a whole	0
R0680	Best Estimate	355
R0690	Risk margin	20
R0700	Technical provisions – index-linked and unit-linked	0
R0710	TP calculated as a whole	0
R0720	Best Estimate	0
R0730	Risk margin	0
R0740	Contingent liabilities	0
R0750	Provisions other than technical provisions	0
R0760	Pension benefit obligations	0
R0770	Deposits from reinsurers	0
R0780	Deferred tax liabilities	0
R0790	Derivatives	0
R0800	Debts owed to credit institutions	0
R0810	Financial liabilities other than debts owed to credit institutions	0
R0820	Insurance & intermediaries payables	93
R0830	Reinsurance payables	0
R0840	Payables (trade, not insurance)	2,765
R0850	Subordinated liabilities	0
R0860	Subordinated liabilities not in Basic Own Funds	0
R0870	Subordinated liabilities in Basic Own Funds	0
R0880	Any other liabilities, not elsewhere shown	0
R0900	Total liabilities	3,252
R1000	Excess of assets over liabilities	4,404

Premiums written

R1410
R1420
R1500

Gross
Reinsurers' share
Net

Premiums earned

R1510
R1520
R1600

Gross
Reinsurers' share
Net

Claims incurred

R1610
R1620
R1700

Gross
Reinsurers' share
Net

Changes in other technical provisions

R1710
R1720
R1800

Gross
Reinsurers' share
Net

Expenses incurred

R1900
R2500
R2600

Other expenses
Total expenses

Line of Business for: life insurance		Total
Health insurance	Other life insurance	
C0210	C0240	C0300
-3	277	274
0	14	14
-3	263	260
-3	277	274
0	14	14
-3	263	260
-46	434	388
0	0	0
-46	434	388
1,290	-110	1,180
-4	0	-4
1,294	-110	1,184
512	-32	480
		0
		480

		Home Country	Top 5 countries (by amount of gross premiums written) - life obligations					Total Top 5 and home country
		C0150	C0160	C0170	C0180	C0190	C0200	C0210
			BE	IE	ES	NL	DE	
		C0220	C0230	C0240	C0250	C0260	C0270	C0280
R1400								
	Premiums written							
R1410	Gross	14	97	-4	0	167	0	274
R1420	Reinsurers' share	14	0	0	0	0	0	14
R1500	Net	0	97	-4	0	167	0	260
	Premiums earned							
R1510	Gross	14	97	-4	0	167	0	274
R1520	Reinsurers' share	14	0	0	0	0	0	14
R1600	Net	0	97	-4	0	167	0	260
	Claims incurred							
R1610	Gross	79	139	-56	0	227	0	388
R1620	Reinsurers' share	0	0	0	0	0	0	0
R1700	Net	79	139	-56	0	227	0	388
	Changes in other technical provisions							
R1710	Gross	279	-426	-129	0	1,455	0	1,180
R1720	Reinsurers' share	-4	0	0	0	0	0	-4
R1800	Net	283	-426	-129	0	1,455	0	1,184
R1900	Expenses incurred	0	275	-60	-1	265	0	480
R2500	Other expenses							0
R2600	Total expenses							480

		Other life insurance		Annuities stemming from non-life insurance contracts and relating to insurance obligation other than health insurance obligations	Accepted reinsurance	Total (Life other than health insurance, including Unit-Linked)	Health insurance (direct business)		Annuities stemming from non-life insurance contracts and relating to	Health reinsurance (reinsurance accepted)	Total (Health similar to life insurance)		
		Contracts without options and guarantees	Contracts with options or guarantees				Contracts without options and guarantees	Contracts with options or guarantees					
		C0060	C0070	C0080	C0090	C0100	C0150	C0160	C0170	C0180	C0190	C0200	C0210
R0010	Technical provisions calculated as a whole	0			0	0	0	0			0	0	0
R0020	Total Recoverables from reinsurance/SPV and Finite Re after the adjustment for expected losses due to counterparty default associated to TP as a whole	0			0	0	0	0			0	0	0
	Technical provisions calculated as a sum of BE and RM												
	Best Estimate												
R0030	Gross Best Estimate		355	0	0	0	355		18	0	0	0	18
R0080	Total Recoverables from reinsurance/SPV and Finite Re after the adjustment for expected losses due to counterparty default		-4	0	0	0	-4		9	0	0	0	9
R0090	Best estimate minus recoverables from reinsurance/SPV and Finite Re - total		360	0	0	0	360		9	0	0	0	9
R0100	Risk Margin	20			0	0	20				0	0	0
	Amount of the transitional on Technical Provisions												
R0110	Technical Provisions calculated as a whole	0			0	0	0	0			0	0	0
R0120	Best estimate		0	0	0	0	0		0	0	0	0	0
R0130	Risk margin	0			0	0	0	0			0	0	0
R0200	Technical provisions - total	375			0	0	375	18			0	0	18

Total	Tier 1 - unrestricted	Tier 1 - restricted	Tier 2	Tier 3
C0010	C0020	C0030	C0040	C0050
4,050	4,050		0	
0	0		0	
0	0		0	
0		0	0	0
0	0			
0		0	0	0
0		0	0	0
354	354			
0		0	0	0
0				0
0	0	0	0	0
0				
0	0	0	0	0
4,404	4,404	0	0	0
0			0	
0			0	
0			0	0
0			0	0
0			0	
0			0	0
0			0	
0			0	0
0			0	0
			0	0
4,404	4,404	0	0	0
4,404	4,404	0	0	
4,404	4,404	0	0	0
4,404	4,404	0	0	
669				
3,338				
6,5849				
1.3195				
C0060				
4,404				
0				
0				
4,050				
0				
354				
0				
0				
0				

			Gross solvency capital requirement	USP	Simplifications
R0010	Market risk	R0010	564	C0090	C0120
R0020	Counterparty default risk	R0020	134		
R0030	Life underwriting risk	R0030	46		
R0040	Health underwriting risk	R0040	0		
R0050	Non-life underwriting risk	R0050	0		
R0060	Diversification	R0060	-118		
R0070	Intangible asset risk	R0070	0		
R0100	Basic Solvency Capital Requirement	R0100	626		
Calculation of Solvency Capital Requirement			C0100		
R0130	Operational risk	R0130	43		
R0140	Loss-absorbing capacity of technical provisions	R0140	0		
R0150	Loss-absorbing capacity of deferred taxes	R0150	0		
R0160	Capital requirement for business operated in accordance with Art. 4 of Directive 2003/41/EC	R0160	0		
R0200	Solvency capital requirement excluding capital add-on	R0200	669		
R0210	Capital add-on already set	R0210	0		
R0220	Solvency capital requirement	R0220	669		
Other information on SCR					
R0400	Capital requirement for duration-based equity risk sub-module	R0400	0		
R0410	Total amount of Notional Solvency Capital Requirement for remaining part	R0410	0		
R0420	Total amount of Notional Solvency Capital Requirements for ring fenced funds	R0420	0		
R0430	Total amount of Notional Solvency Capital Requirement for matching adjustment portfolios	R0430	0		
R0440	Diversification effects due to RFF nSCR aggregation for article 304	R0440	0		
Approach to tax rate			Yes/No		
R0590	Approach based on average tax rate	R0590	3 - Not applicable as LAC DT is not used (in this case R0600 to R0690 are not applicable)		
Calculation of loss absorbing capacity of deferred taxes			LAC DT		
R0600	DTA	R0600			
R0610	DTA carry forward	R0610			
R0620	DTA due to deductible temporary differences	R0620			
R0630	DTL	R0630			
R0640	LAC DT	R0640	0		
R0650	LAC DT justified by reversion of deferred tax liabilities	R0650	0		
R0660	LAC DT justified by reference to probable future taxable economic profit	R0660	0		
R0670	LAC DT justified by carry back, current year	R0670	0		
R0680	LAC DT justified by carry back, future years	R0680	0		
R0690	Maximum LAC DT	R0690	0		

Linear formula component for non-life insurance and reinsurance obligations

		C0010		
R0010	MCRNL Result	0	Net (of reinsurance/SPV) best estimate and TP calculated as a whole	Net (of reinsurance) written premiums in the last 12 months
			C0020	C0030
R0020	Medical expenses insurance and proportional reinsurance	0	0	0
R0030	Income protection insurance and proportional reinsurance	0	0	0
R0040	Workers' compensation insurance and proportional reinsurance	0	0	0
R0050	Motor vehicle liability insurance and proportional reinsurance	0	0	0
R0060	Other motor insurance and proportional reinsurance	0	0	0
R0070	Marine, aviation and transport insurance and proportional reinsurance	0	0	0
R0080	Fire and other damage to property insurance and proportional reinsurance	0	0	0
R0090	General liability insurance and proportional reinsurance	0	0	0
R0100	Credit and suretyship insurance and proportional reinsurance	0	0	0
R0110	Legal expenses insurance and proportional reinsurance	0	0	0
R0120	Assistance and proportional reinsurance	0	0	0
R0130	Miscellaneous financial loss insurance and proportional reinsurance	0	0	0
R0140	Non-proportional health reinsurance	0	0	0
R0150	Non-proportional casualty reinsurance	0	0	0
R0160	Non-proportional marine, aviation and transport reinsurance	0	0	0
R0170	Non-proportional property reinsurance	0	0	0

Linear formula component for life insurance and reinsurance obligations

		C0040		
R0200	MCRL Result	8	Net (of reinsurance/SPV) best estimate and TP calculated as a whole	Net (of reinsurance/SPV) total capital at risk
			C0050	C0060
R0210	Obligations with profit participation - guaranteed benefits	0	0	
R0220	Obligations with profit participation - future discretionary benefits	0	0	
R0230	Index-linked and unit-linked insurance obligations	0	0	
R0240	Other life (re)insurance and health (re)insurance obligations	369		
R0250	Total capital at risk for all life (re)insurance obligations			0

Overall MCR calculation

		C0070
R0300	Linear MCR	8
R0310	SCR	669
R0320	MCR cap	301
R0330	MCR floor	167
R0340	Combined MCR	167
R0350	Absolute floor of the MCR	3,338

		C0070
R0400	Minimum Capital Requirement	3,338